

TOUR OF HOMES

CENTRAL MINNESOTA BUILDERS ASSOCIATION



September 13, 14, 15
September 20, 21, 22

Homes are open two weekends

Friday 4:30-7 pm

Saturday & Sunday Noon-5 pm

CMBATour.com



Sponsored by

Scan the QR Code. Open the CMBA Tour App on your phone.





Visit Us On The Tour!



QUALITY BUILDING AT THE RIGHT PRICE!

Whether you're looking for your first home, your dream home or your retirement home, at Woodland Homes we will build it for you and we build it right. We only work with local, reputable subcontractors with the same focus on quality craftsmanship, building materials & products.



Rob Klaphake

320.230.7700

2229 6th Street S - Sartell, MN



**VOIGT
JOHNSON**
Craig Hiltner

WoodlandHomesOnline.com

MN Lic.#565225



**One-Time Close Construction
to Permanent Financing**

- Save thousands with one-time close
- Rate Lock prior to construction
- 12 month construction draw period
- Local underwriting & decision making
- Creative, customized financing options
- Also includes remodeling projects



Call for a
FREE CONSULTATION



TIM SMITH

NMLS# 533151

(320) 529-4230

TimS@LogBank.com

Apply Online:

logbankmortgage.mymortgage-online.com



AMERICAN HERITAGE BANK

St. Cloud West
(320) 654-9555

St. Cloud East
(320) 257-5000

Clearwater
(320) 558-2021

Wayzata
(952) 767-3491

Avon
(320) 356-7334

Long Prairie
(320) 732-6131

Browerville
(320) 594-2215

Find your nearest dealer online at
bayerbuilt.com



Exterior Doors.

Choose from hundreds of style options, all designed and built with premium components to meet the extreme and unpredictable conditions of the Midwest climate. **Upgrade your entry door, to an entry system...**

Acclimated **Entry Systems**





Finally, a neighborhood that reflects the way you want to live.

The Cove offers beautiful one of a kind homesites and miles of groomed trails, winding through over 70 unspoiled acres designated as neighborhood common space for exploring, camping, picnicking or gathering with friends and family including a private boat landing on the Mississippi River.

Far enough away, yet close to the attractions and conveniences of Sauk Rapids, Sartell and St. Cloud.

Build Your New Home at The Cove!

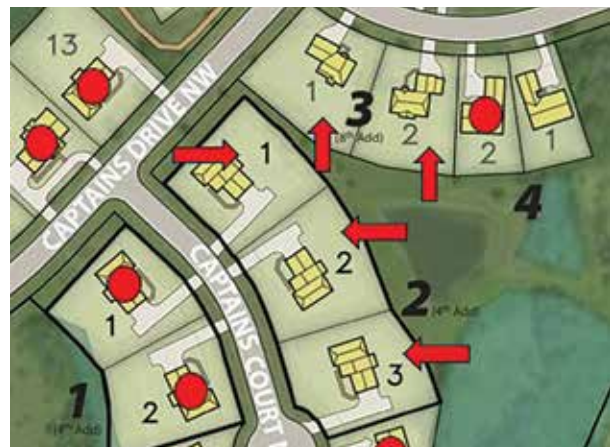
New homes starting at \$450,000.



www.buildwithbrownstone.com



*New! Five extraordinary ½ acre homesites:
Walkout, lookout and full basement.*



LiveAtTheCove.com

FALL 2024

CONTENTS

- 8** WELCOME message from
2024 CMBA President,
Jack Brandes
- 8** 2024 CMBA Leadership
- 10** SPONSOR: Bayer Built Woodworks
- 14** Additional Article
- 16** Tour of Homes Builder Showcase



6

Meet the
2024 CMBA
President

34

Learn all about
the CMBA
Tools for Schools
program



TOUR OF HOMES MAP Pages 20-21

TOUR OF HOMES MODELS Pages 22-30

- 32** 2024 Tour of Homes
Committee
- 27** Become A
CMBA Member
- 34** Tools for Schools

10

Bayer Built
Woodworks, a Central
Minnesota company
that's ready for
the future



TOUR OF HOMES



CENTRAL MINNESOTA BUILDERS ASSOCIATION

September 13, 14, 15 • September 20, 21, 22

Friday 4:30-7 pm

Saturday & Sunday Noon-5 pm

THANK YOU TO OUR SPONSORS:



/CMBA.MN

CMBAtour.com



@CMBAAonline

CMBAonline.org



Scan the QR Code.
Open the CMBA Tour
App on your phone.



Local Experts. Local Service. Locally Owned. Shop Simonson



The Marvin Signature® collection

Stick to *Window Panes*, Not *Window Pains*.

Replacing all the windows in your home (or even just one) can seem like a daunting task. At Simonson, we're dedicated to sharing our knowledge as your friendly, local window experts to help make replacing your windows a breeze. Upgrade your home with Simonson Lumber and Marvin windows, and experience the perfect combination of style, efficiency, and durability.

Take the first step toward transforming your living space into a place you'll **love** to call home, by visiting one of Simonson Lumber's two St. Cloud Locations, and check out our collection of Marvin products.



WELCOME



Jack Brandes
2024 President
Lumber One, Avon Inc.

Welcome once again to the Central Minnesota Builders Association Fall Tour of Homes! This year's tour features 11 incredible homes built by 10 different home builders. These homes not only represent the architecture and creativity of the builder, but also offer a showcase for our wonderful associates and subcontractors! Thank you for making these places a home where families will begin and memories will be made.

Last year, we had endured one of the hottest and driest summers on record in Central Minnesota. This year however has been a different story. We have had more rain than we know what to do with, several areas have experienced high water levels which has caused

flooding, and once again we have seen some of the devastating effects left by severe thunderstorms.

As recovery begins to take place after these disasters, it is important to make sure to pick the RIGHT contractor for your home repairs in order to avoid being scammed by potential storm chasers. Below is a list put together by the Central Minnesota Builders Association of things to remember when hiring a professional contractor.

- Ask for proof of current license or make sure the contractor is licensed by visiting the Department of Labor and Industry website.
- Confirm proof of general liability and workman's compensation insurance
- Get referrals from neighbors, family, and friends. Some of the best contractors get all of their business by word of mouth so help spread the word!
- Ask your contractor for references.
- Make sure a contract is in writing and be wary of anyone who wants cash payments.
- Check with your local building department for information on if and when a building permit may be needed. Confirm that this inspection card is on site when your contractor is to begin their work.
- As always, check to see if your contractor is a member of the CMBA! The best professionals tend to join their industry associations. They seek opportunities to learn as much as they can about their industry and to stay on top of current events and issues, as well as to participate in industry-specific training and network with their peers. They join to give back to their industry and communities by participating in volunteer service efforts.

We have had a busy last few months at the CMBA between Builder's Day at the Capitol, Casino Night, Bags for Tools, Golf Outing, and our Sporting Clay Shoot. Thank you to these great vendors, our awesome sponsors, and the many participants for making all of these events happen and we look forward to a busy fall and winter ahead!

Wishing you all a happy and prosperous year!

Jack Brandes

2024 CMBA President
Lumber One, Avon Inc.

CMBA Officers & Directors



Marty Czech
1st Vice President
Premier Real Estate
Services - Marty Czech



Greg Wensmann
2nd Vice President/
Treasurer
Wensmann Contractors LLC



Curtis Brown
Associate VP
Edward Jones



Stewart Swenson
Secretary
SUNCOM Development,
Construction, Management



Jeremy Salzbrun
Past President
H&S Heating & AC
Residential & Service



LaNae DesRosier
Director
SB Restoration Services, Inc.



Nate Moeller
Director
Paramount Construction



Alex Mastellar
Director
Rinke Noonan



Jim Alvord
Director
Restore 24 LLC



Ron Molitor
Director
Rice Companies



Randy Weiher
Director
Erbauer Built, LLC



Lynn Dirkes
Director
Magnifi Financial
Credit Union

CMBA Staff



Wanda Schroeder
Executive Director



Steve Gottwalt
Government Affairs
Consultant



Nikki Juntunen
Executive Assistant

***Building & remodeling in St. Cloud
and surrounding areas for over 40 years.***



dghomes-remodeling.com

320-251-9416

MN Lic: BC633099



**See our Tour Model #2
3267 Old Stone Way NE, Sauk Rapids, MN 56379**

A "Must See" 1587 sq ft 2 bedroom, 2 Bath, plus Den/Office with glass French doors. Master Suite with Large Walk-in Shower with culture marble walls, vanity with double lav's, and large walk-in closet. Kitchen with large island and lots of cabinets. Warm Fire place in Living area lots of natural light throughout living area. Patio and Porch area with privacy fencing. Finished yard with sprinkler system. Many additional lots available, home & lot packages starting \$380's.

Additional home and lot packages starting at \$380's

These images are not part of Tour of Homes Model #2.



We work with you on every detail! Building a new home or addition, or remodeling?
Call to schedule your **FREE CONSULTATION!**





ELEVATING HOME DESIGN

Tuning in to Trim Trends with the 2024 Fall CMBA Tour of Homes Sponsor, **Bayer Built Woodworks**

Written by Kirsten Freeman

Photos from Bayer Built Woodworks



Bayer Built Woodworks has become a cornerstone in home design since it began as a pre-hung interior door business in 1983.

As autumn approaches, Central Minnesota home enthusiasts eagerly anticipate the annual Fall CMBA Tour of Homes. We celebrate Bayer Built Woodworks as the proud sponsor of this event that showcases the best of local home building and remodeling from builders to suppliers.

A Legacy of Excellence

With deep roots in Central Minnesota and an ever-expanding collection of millwork solutions, Bayer Built has become a cornerstone in home design since it began as a pre-hung interior door business in 1983. Today, the company is a leading provider of millwork, doors and stair parts, serving over 800 distributors from Minnesota to Montana.

Holly Bayer, an interior designer by trade, brings a keen eye for design helping to ensure Bayer Built's product portfolio remains top-notch and on-trend. "We have innovative, creative vendors who we love collaborating with on new product design," Holly said, "and we pay close attention to what homeowners throughout the Midwest are looking for." Holly says their customers are craving a home that is restful and reflective of their individual personalities.

"We try to make sure to tap into three or four different styles that we know our customers are looking for," she said.

Nostalgia plays a strong role in home design, which is evident in the “granny chic” style and typically includes mixed prints on wallpaper and fabrics. It also incorporates stacked, detailed trim elements, robust staircases, wide wainscoting and thick base and case moldings. “It’s got a high-volume vibe, stained wood and lots of color,” Holly said.

“On the opposite end of the spectrum, is a softer, modern style. It’s unfussy and sleek,” Holly said. This style often includes single panel doors or equal, three-panel doors, natural wood, white, black and forged iron.”

“Additionally, the Craftsman or Prairie style will always be popular in our territory because it was invented in the Midwest,” Holly said. “This style has simple, clean lines, three panel interior and exterior doors, flat casings, tall baseboards and built-in cabinetry.”

For those who don’t fit into these three current trends, “we also offer a lot of transitional, versatile pieces that can be mixed and matched to use anywhere with any style – that in-between,” Holly said.

Embracing Bold Design Trends

Bayer Built prides themselves on the versatility, quality, and beauty of their product line. Let’s explore some of the standout design trends available from Bayer Built.

Wainscoting in deep colors – Wainscoting and full-scale wall treatments add visual appeal and charm to any room, and when finished in deep, dramatic hues, it transforms a room into a cozy, inviting – and sometimes dramatic - space.

Stainable shiplap -- Shiplap, beloved for its rustic charm, now comes in stainable options, allowing homeowners to customize their spaces with a personal touch. This versatile element bridges the gap between traditional and contemporary styles, making it a favorite in many homes.

White Oak doors and trim -- “White Oak is taking the country by storm,” Holly shares. “It has a very straight grain and less pink than red oak.” White Oak’s timeless appeal and durability make it a sought-after choice for doors and trim, lending a warm, organic feel to



Above: Wainscoting in deep colors create visual charm.

Below: White Oak Doors and Trim: Timeless appeal.



Bayer Built continued on next page



Bayer Built continued from previous page

interiors. "Wood, in general, has a style appeal of its own," Holly said, "It's a natural thing and every piece is different, beautiful and special."

Sleek, modern stair parts – Homeowners are embracing sleek stair parts such as forged iron balusters and panels that follow the slope of the staircase. These elements offer a clean, contemporary look while providing safety and functionality. Holly is particularly pleased with the direction of this product. "We're really happy with where our stair parts category is going. It's updated, modern, and functional," she said.

Tone on tone trim and doors Tone on tone design involves using varying shades of the same color to create a cohesive, sophisticated look. This trend is perfect for those who appreciate subtle elegance and a unified aesthetic throughout their home.

Bayer Built's commitment to quality and style is evident in its diverse range of products and time-honored tradition of customer satisfaction. Holly's hands-on approach and deep understanding of design trends allow Bayer Built to offer products that are both relevant and functional. This careful curation ensures that Bayer Built can meet the varied tastes and preferences of its customers and stay ahead of trends while maintaining traditional values.

Above: Sleek stairs parts for an updated modern, and functional design.

Left: Tone on tone trim and doors..





Enhance the style and security of your home.




"It's so much more than a garage door"

Garage Doors • Garage Door Service & Repairs
Garage Screen Doors • Garage Door Openers & Accessories



www.americandoorworks.com
320-253-1310



EAST SIDE GLASS

- ▶ Specializing in custom heavy glass frameless shower enclosures
- ▶ Family owned and operated since 1953
- ▶ Several full size glass showers on display in our showroom

Showroom hours
8am-5pm M-F

Over 70 Years In Business! Since 1953.



We can easily replace moisture clouded glass in your existing windows!



Screen repair is easy!

305 Franklin Ave NE • St. Cloud MN, 56304
320-251-1900
www.eastsideglass-mn.com





TOUR OF HOMES

FREE APP

Search CMBA Tour



Scan the QR Code for the CMBA Tour App



/CMBA.MN
CMBAatour.com



@CMBAonline
CMBAonline.org



Tri-County Abstract and Title Guaranty
A Division of First American Title

The Choice is YOURS. Choose the BEST!



Providing Title & Escrow Services for Residential and Commercial clients since 1973!

122 12th Ave. N,
St. Cloud, MN 56303

320-253-2096
www.firstam.com

Publisher Information

Central Minnesota Builders Association
2848 2nd Street South Suite 145, St. Cloud, MN 56301
www.cmbaonline.org • info@cmbaonline.org • 320.251.4382
Executive Director: Wanda Schroeder

The Tour of Homes™ Magazine Is the official publication of the Central Minnesota Builders Association. Neither the Central Minnesota Builders Association, Trace Creative, or advertisers will be responsible or liable for misinformation, misprints, typographical errors, etc., herein contained. No part of the magazine (advertising or editorial) may be reproduced In whole or In part without written permission from the Central Minnesota Builders Association and Trace Creative.

Magazine Manager • Sales
Design/Creative

TraceCreative

Trace Creative specializes in Brand Strategy, Marketing Consulting and Design. For more information on what Trace Creative can do for you, call **320-290-2518** or www.tracecreative.pro.

Map..... Mustang Mapping and GIS
Writer Kirsten Freeman



CREATING A PET-FRIENDLY PALACE

5 ways to set up a safe, cozy home for cats and dogs.

(Family Features) As much as you love your pets and work hard to make them part of the family, they're also a big responsibility. Part of that responsibility includes setting up your home so it's equal parts stylish (for you) and functional (for Fido).

Show furry friends a little love, beyond the walks and snuggles, by making your home more pet friendly.

Set Up Their Space Near an Entry

It's common for pet owners to desire a space to keep all their furry friends' belongings and avoid clutter. Ensure convenience and cleanliness by establishing an area near the door where you can store leashes, collars, toys and more. Consider keeping a towel or two nearby for wiping paws (and snouts) after going outside. You can also keep

your pets' beds, food and water bowls in this space so it feels like their own little "home" when returning from a walk or going to sleep at night.

Consider Stain-Resistant Fabrics

From furniture to decor, avoiding fabrics that attract pet hair is a no-brainer for pet owners looking to escape a constant mess. Silk and velvet are virtual magnets for fur, while alternatives like leather offer more practical choices that are easy to clean and durable.

Install Resilient Flooring

Reduce your fear of zoomies causing damage to your floors by installing resilient flooring focused on reducing wear. Both durable and beautiful, a variety of Beautifully Responsible floors take on some of the burden of pet

ownership with built-in durability for the everyday and the unexpected. With options designed to bridge the gap between style and function, numerous water-resistant and waterproof floors give you and your pets room to live your best lives for years to come without wet shakes triggering worries. Plus, many resilient floors don't flinch when it comes to addressing muddy paws, often only requiring the mud to be easily wiped away, without harsh cleaning products.

Decorate with Pets in Mind

Displaying Grandma's fine China and your favorite sports memorabilia may not go hand-in-hand with

pet ownership – that autographed baseball may look more like a chew toy than a treasured artifact. Instead, prioritize decor that's washable and sturdy so you can avoid coming home to a delicate family heirloom shattered on the floor.

Pet-Proof the Yard

If you plan on your pets being outside on their own, it's a good idea to carefully inspect your outdoor spaces before letting them roam. Look for gaps in the fence, identify potentially harmful plants and ensure outdoor structures like grills and furniture are secure.



How Pet Owners Can Benefit from Resilient Flooring

It's likely you want your pets to live their best lives without sacrificing your own gorgeous spaces. With a variety of attractive options to fit your aesthetic, Beautifully Responsible resilient flooring provides durability against dirt, spills and sprints. Consider these benefits of floors that fit your style and give furry friends room for fun:

Deny Dirt and Dander

Once playtime outside is over, that mess can sometimes make its way inside. Designed to make cleanup easier, many resilient flooring options can make removing messes, odors and pet hair a cinch. From sheet solutions to modular configurations, resilient flooring can typically be cleaned without harsh chemicals – just make sure to follow the manufacturer's recommended cleaning instructions.

Zoom On

Many Beautifully Responsible resilient floors are durable enough to stand up to those zoomies. These options are ready for your dogs' and cats' fastest sprints, and make for quick clean up when they accidentally turn over a favorite flowerpot or their own water bowls.

Reduce Water Worries

Those vigorous tail wags near a fresh bowl of water lead to even good boys and girls causing a spill now and then. With many waterproof and water-resistant options for even the messiest of pets, you can be more confident in resilient floors standing up to spills so you can forgive puppy-dog eyes even faster.



Bulow Mn, Inc.
Chris & Linda Bulow
MN: BC741984
11690 95th St. NE
Otsego, MN 55330
612-219-8020
bulowind@gmail.com
bulowinc.com

BULOW MN, INC. was established in 1989 by Chris and Linda Bulow. We work as a team to build a wide price range of homes with a special focus on one level living. Creating quality living environments that make you feel at home. Our goal is to provide outstanding customer service in order to create a relationship that lasts long after the building process is complete. With a strong passion for the industry and a long history of residential building and developing expertise, Bulow MN Inc. will guide you through the process from start to finish.

Home #1



Elite Development, LLC
MN: BC711080
544 24th Avenue North
St. Cloud, MN 56303
320-250-4588
tylerkeller7@yahoo.com

Elite Development strives to deliver the best possible building experience with over 40 years of experience in the real estate, construction, and development industries. We have the ability to provide you with a seamless transaction. we believe the best way to build a home is to be honest and upfront. We will take the time to meet with you and assess your wants and needs; then sit down with a designer to create the best possible home plan for you. We are involved and hands on with each and every home that we build. we consistently monitor progress and make sure that our clients are kept up to date and involved in all decision making processes.

Home #6



Lumber One Avon
Jack Brandes
MN: BC001820
101 2nd St. NW
Avon, MN 56310
320-356-7342
jbrandes@lumber-one.com
lumber-one.com

Lumber One Avon has been building homes in Central Minnesota for over 60 years. Our full service building center includes a retail lumber year, interior design services, drafting services, and a retail hardware store and showroom. We pride ourselves on using the highest quality materials and experienced trade contractors. At Lumber One, we strive to bring honesty and integrity to all our interactions with customers, suppliers and coworkers. Check out our website for one of our many plans and info on all our developments.

Home #7



Schnettler Custom Builders
Lynn & Bill Schnettler
MN: BC374693
2137 Tamarack Drive
St. Cloud, MN 56301
320-290-0823
320-309-8890
dan@schnettlercb.com
jason@schnettlercb.com
schnettlercb.com

Meet the emerging faces of Schnettler Custom Builders Jason Frieler and Dan Stein. Jason is a project manager who has experience in several construction disciplines and has been with the company since July 2020. Dan Stein joined the company in 2022 and his construction-based skills include architectural drafting, building material estimating and project managing. Bill Schnettler has been a custom home builder and designer for more than 40 years. Lynn Schnettler does the bookkeeping and assists clients with interior selections. Using Chief Architect software, Joseph Schnettler designs our unique houses from his location in Austin, Texas.

Home #8



The area's most **real** real estate experts.

Experience **nice and simple** lending.

Contact us today or start your application
online at deerwoodbank.com



**DEERWOOD
BANK**

NMLS#408174

Bethany Schwinghammer | Real Estate Lender
bethany.schwinghammer@deerwoodbank.com
320.257.3304 | NMLS #796820
Waite Park

Jim Arnold | Real Estate Lender
jim.arnold@deerwoodbank.com
320.257.3317 | NMLS #423382
Waite Park

FOLLOW THE SIGNS...

12

**TOUR OF
HOMES**

CENTRAL MINNESOTA BUILDERS ASSOCIATION



No food or drink inside homes • Wear socks • No shoes • No bare feet

Scan the QR Code for the CMBA Tour App

CMBAtour.com • CMBAonline.org • INFO@CMBAONLINE.ORG • 320-251-4382



werschayhomes.com

Homes #3 & 9



berscheidbuilders.com

Home #5





Smart'n Construction

Derek Mueller
Mn: BC726807
10 Main St E
Richmond, MN 56368
320-597-7300
derek@smartnconstruction.com
smartnconstruction.com

Derek Mueller has been serving the local building industry since 2005. He grew up on a small farm here in Central Minnesota, where his roots in a strong work ethic, integrity, and creativity were established. For the past 12 years, Derek has worked with Lifestyle Lumber in sales and estimating, becoming an expert in building materials with a passion for design and building turnkey homes. Now, as the owner of Lifestyle Lumber since 2024, Derek has made projects easier and more streamlined, benefiting both the builders and clients.

Home #10



Woodland Homes

Robert Klaphake
MN: BC565225
22296th Street S
Sartell, MN 56377
320-230-7700
robklaphake@woodlandhomes.biz
woodlandhomesonline.com

Woodland Homes, Inc. was established in 2005 by Robert Klaphake. Over 19 years, Woodland Homes has become a leading residential builder in Central Minnesota. Woodland Homes has a network of trustworthy subcontractors & dedicated employees to help you realize your ideal home, start to finish, from design services to post sales services. With over 30 years of licensed contracting experience and more than 350 homes built, Rob has honed his practice of custom home building, and achieved an unmatched understanding of what clients want, expect and love of the finished product, making Woodland Homes a widely known and well-respected custom home builder in the central Minnesota area.

Home #4



DG Homes & Remodeling, Inc.

Don Girtz
Mn: BC633099
P.O. Box 608
Sauk Rapids, MN 56379
320-251-9416
don@dghomes-remodeling.com
dghomes-remodeling.com

Building and remodeling has been a passion for Don and his staff at DG Homes & Remodeling since starting his business over 40 years ago. With the industry changing and constantly making things better, Don and staff stay deeply involved. "Hi, this is Don. What also keeps us going strong and still growing is the great feeling of accomplishment you get when you know you're doing your very best, and above that the rewarding appreciation received by our clients as their projects are being completed. Check us out and become part of our family of friends. Thank you! We hope to hear from you soon."

Home #2



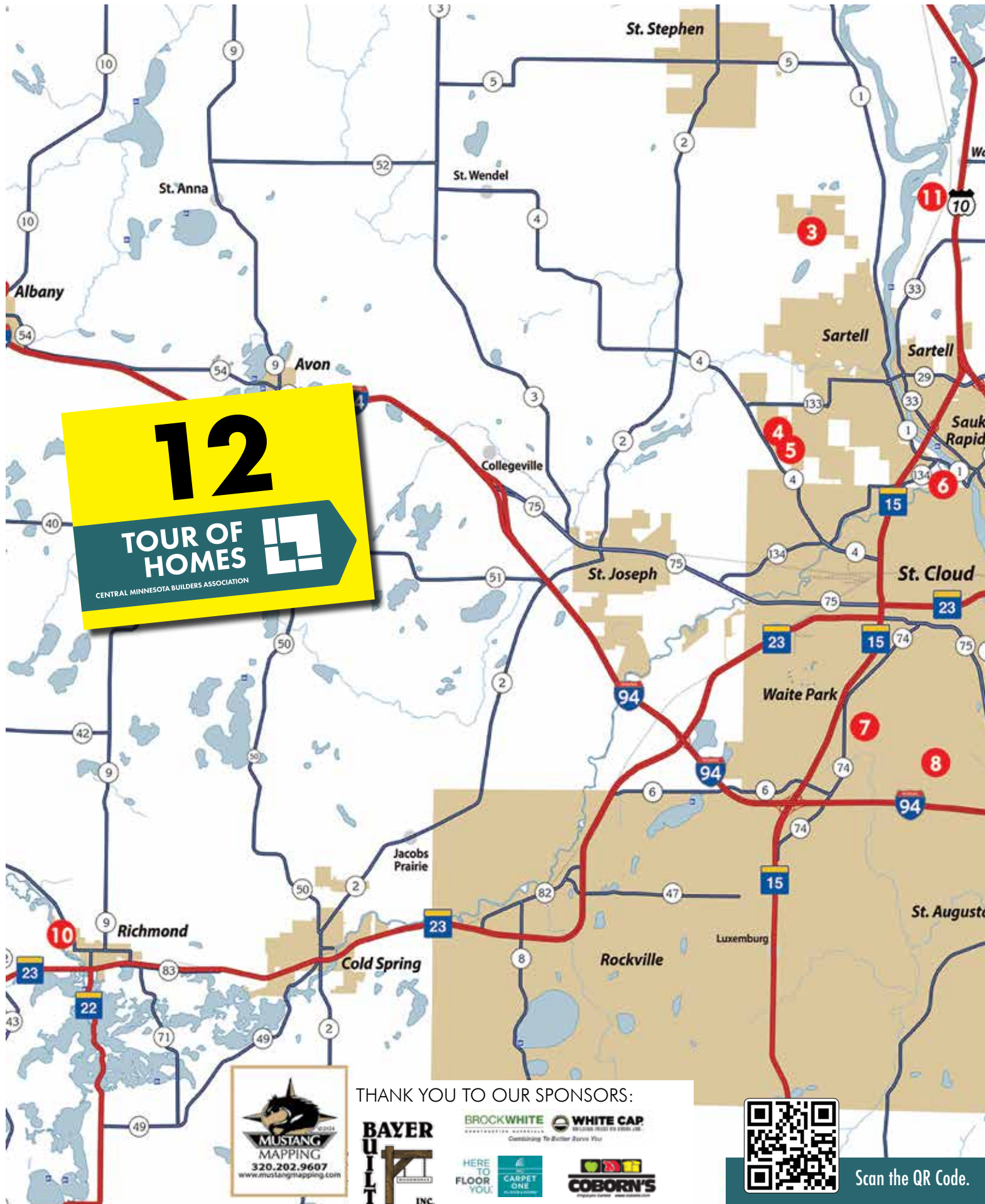
CONSTRUCTION, INC.

BCI Construction, Inc.

Mn: BC220596
7135 5th Ave. NE, Sauk Rapids, MN 56379
320-393-3185
tlardy@bciconstruction.us • bciconstruction.us

At BCI, we want your building process to be an amazing experience. We have the people, the best practices, and the positive energy to make it happen. We approach every type of construction with the same amount of enthusiasm and innovation, whether you're looking for a remodel or a ground-up build. Our unbiased approach allows us to build long-term partnerships centered around our clients' best interests.

Home #11



12

TOUR OF
HOMES

CENTRAL MINNESOTA BUILDERS ASSOCIATION



THANK YOU TO OUR SPONSORS:



Scan the QR Code.



Open the CMBA Tour App on your phone.

TOUR OF HOMES



CENTRAL MINNESOTA BUILDERS ASSOCIATION

September 13, 14, 15 • September 20, 21, 22

Friday 4:30-7 pm • Saturday & Sunday Noon-5 pm

1 Bulow MN, Inc.
207 57th Ave. SE
The Fairways
St. Cloud

2 DG Homes & Remodeling
3267 Old Stone Way NE
Villages of Creekside
Sauk Rapids

3 Werschay Homes
2722 Lehman Court
The Gates at Blackberry
Sartell

4 Woodland Homes
2104 Lindas Court
Arbor Trails 3rd Addition
Sartell

5 Berscheid Builders
1921 Whippoorwill Way
Sandstone Village 2
Sartell

6 Elite Development
2019 Forest Court
Parkview Estates
St. Cloud

7 Lumber One Avon
3013 Nottingham Road
Stone Gate
St. Cloud

8 Schnettler Custom Builders, LLC
3504 Wildflower Road S
Deer Creek Crossing
St. Cloud

9 Werschay Homes
22027 Majestic Drive
Eagles Landing
St. Augusta

10 Smart'n Construction
708 4th St. NW
Rich River Estates
Richmond

11 BCI Construction, Inc.
6624 Captains Circle NW
The Cove
Sauk Rapids



/CMBA.MN

CMBAatour.com



@CMBAonline

CMBAonline.org

1

207 57th Ave. SE • The Fairways • St. Cloud



3 Beds | 2 Baths | 1,753 sq ft

DIRECTIONS From the west take Hwy. 23 east, turn right on 14th Ave. SE which turns into 2nd St. SE, then turn left on 55th Ave. SE. turn right on 2nd Ave. SE, right on 57th Ave. SE. First house on the right



612-219-8020
bulowinc.com

Tour this beautiful one level home! The view to the backyard amenity of Territory golf course is captured by the large windows! The kitchen island is central to the design as it flows to the main living areas. Custom cabinets in alder function perfectly with additional options like the pots & pan drawers and pull out recycle center. The living room fireplace with a modern mantle & shiplap accent lend a unique focal point. The owner's bedroom feels expansive with its tall pan ceiling. For your private suite experience you will love the owners' bathroom with a zero entry tiled shower, double sink vanity & walk in closet! The back entry/ laundry offers much space to keep you organized. The 3 car garage is completely finished, insulated & painted. Quality Smartside, maintenance free, board & batten covers the front of this home giving it that modern farmhouse appeal. Relax in the screened-in porch & enjoy the outdoor patio area with friends & family!

Counters Custom Stone Interiors
Millwork Bayer Built Woodworks
Garage Doors Metro Home Insulation & Waterproofing

Insulation..... Metro Home Insulation & Waterproofing
Windows..... Thermo-Tech Premium Windows and Doors

2

3267 Old Stone Way NE • Villages of Creekside • Sauk Rapids



2 Beds | 2 Baths | 1,587 sq ft

DIRECTIONS Take Hwy. 23 E turn north onto Mayhew Lake Rd. NE. Turn right onto 35th St. NE. Turn right onto Old Stone Way NE.



320-251-9416
dghomes-remodeling.com

A "Must See" 1587 sq ft 2 bedroom, 2 Bath, plus Den/ Office with glass French doors. Master Suite with Large Walk-in Shower with culture marble walls, vanity with double lav's, and large walk-in closet. Kitchen with large island and lots of cabinets. Warm Fire place in Living area lots of natural light throughout living area. Patio and Porch area with privacy fencing. Finished yard with sprinkler system. Many additional lots available, home & lot packages starting \$380's.

Appliances Karl's TV & Appliance
Building Materials Simonson Lumber
Cabinets..... Brenny Custom Cabinets, Inc.
Electrical Mechanical Energy Systems
Excavating J&S Excavating
Exteriors..... Simonson Lumber
Flooring MCI Multiple Concepts Interiors - Carpet One

Garage Doors American Door Works
HVAC Mechanical Energy Systems
Insulation..... McPherson Systems
Landscaping..... DG Home & Remodeling
Lighting..... MCI Multiple Concepts Interiors - Carpet One
Windows..... Thermo-Tech Premium Windows

Collaborative Custom Design Experience



Custom home plans designed to fit your family's needs now and in the future

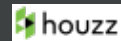
Beauty and function expressing your personality and lifestyle

Preferred by clients with a passion for design & detail



Design your DREAM HOME. Contact us today.

320.248.5580 • www.adsdesignsmn.com • info@adsdesignsmn.com



3

2722 Lehman Court • The Gates at Blackberry • Sartell



5 Beds | 4.5 Baths | 4,642 sq ft

DIRECTIONS Take Pinecone Rd. North toward the High School. Left (West) on 27th N (Right) on Lehman Court. House on your Left.

WERSCHAY HOMES

320-230-9909

werschayhomes.com

Werschay Homes showcases its unique take on the traditional farmhouse styling with modern amenities and features. This large two-story home delivers stunning curb appeal with the traditional white and black silhouette and strong roof lines. The main level welcomes you home with 10' ceilings complimented by massive hand scraped timbers. Giant floor-to-ceiling Marvin Windows and Patio Doors fill the space with natural light and showcase the open concept main level. The gourmet kitchen with chefs' appliances and a massive island is complimented by a prep-kitchen or "Dirty-Kitchen" which leads to the large pantry. The distressed oak floors and custom cabinets make this home a must see. Upper-level leads to an owner suite with zero-entry shower, soaking tub and owner's closet. Three additional bedrooms and an oversize bonus room round out the upper level. The lower level offers a large exercise room with windows overlooking the family room complete with a wet bar. A guest suite and additional full bath complete the lower level. The home site is completed by landscaping, including paver patio with gas fire pit. Jump in your golf cart and run up to the clubhouse at BlackBerry Ridge Golf Course using the neighborhood path. Home is located just blocks from Top-Ranked Sartell Schools.

CO-SPONSOR



Building Materials Simonson Lumber
Cabinets..... Oak Hill Custom Cabinets
Countertops Granite Tops
Electrical Bertram Electric, Inc.
Fireplace & Insulation..... Metro Home
Insulation & Waterproofing

Flooring MCI Multiple Concepts
Interiors - Carpet One
HVAC Mechanical Brothers
Millwork Bayer Built Woodworks
Plumbing Pipers Plumbing of Central MN
Windows..... Marvin Windows and Doors

4

2104 Linda's Court • Arbor Trails 3rd Addition • Sartell



320-230-7700

woodlandhomesonline.com

Walk in and appreciate the thoughtful layout and construction of this gorgeous new patio home in Sartell's Arbor Trails neighborhood! Vaulted ceilings, granite countertops & generous-sized pantry grace this elegant kitchen. The walk in mudroom closet serves as a safe room. Separate laundry room, tray ceiling in the primary bedroom, tile roll in shower, cozy fireplace, in-floor heat, and covered rear porch are also a few highlights to note in this beautiful patio home! Enjoy all your living space with the ease of no stairs!

3 Beds | 2 Baths | 1,806 sq ft

DIRECTIONS From Cty Rd 4 (Veterans Drive) NW to Arbor Parkway, then turn right, turn left on Sandstone Loop and then left on Linda's Court

CO-SPONSOR



Appliances Quality Appliances and TV Center
 Building Materials Lumber One Avon
 Cabinets Schlangen's Custom Cabinets
 Exteriors Brock White & Beacon Building Products
 Flooring MCI Multiple Concepts Interiors - Carpet One

Garage Doors American Door Works
 HVAC Finken Water Treatment, Plumbing, Heating & Cooling
 Lighting MCI Multiple Concepts Interiors - Carpet One
 Plumbing Finken Water Treatment, Plumbing, Heating & Cooling

5

1921 Whippoorwill Way • Sandstone Village 2 • Sartell



320-255-1412

berscheidbuilders.com

Must-see Craftsman style single story, 1,879 sq foot, 3 bedroom and 2 bathroom, 3 stall garage premier patio home with distinct rear-alley entry garage concept located in Sartell Association maintained neighborhood. While the weathered gray, oak cabinetry and leathered granite countertops combine a creative space with an ease of workflow, its real advantage comes from the connection to the dining room and great room. You will be greeted by a modern, electric fireplace surrounded by stone and topped with a rustic mantle. This rear entry design allows you to drop your essentials in the mudroom/drop zone to create optimal organization and sustains a clutter-free living space. Private owners' suite is secluded from the rest of the home with a large private bath that includes ceramic tile walk in shower and expansive walk-in closet.

3 Beds | 2 Baths | 1,879 sq ft

DIRECTIONS Take Cty Road 4 (Veterans Drive) at the traffic circle, take the 2nd exit and stay on Cty Rd 4, turn right onto 19th Ave S, turn left onto Whippoorwill Way.

CO-SPONSOR



Appliances Karl's TV & Appliance
 Building Materials Simonson Lumber
 Cabinets Westwind Woodworkers
 Design ADS Designs
 Electrical Mechanical Energy Systems
 Flooring Cold Spring Carpet

Garage Doors American Door Works
 HVAC Mechanical Energy Systems
 Lighting Minnesota Lighting, Fireplace & Flooring Showroom
 Plumbing Mechanical Energy Systems

Marketing • Branding • Design

TraceCreative

Your consultant for
thoughtful,
purposeful and
successfully implemented
marketing and design.

Solutions you need to meet all your challenges

Trace Creative will drive your
brand image and business goals
through thoughtful and
purposeful marketing strategy,
branding and design.

Branding
Marketing
Graphic Design
Project Management

www.tracecreative.pro
320-290-2518 • zwillingtracy@gmail.com

Aggregate ♦ Asphalt ♦ Ready-Mix



Knife River delivers high quality construction materials and services throughout Minnesota. We provide aggregates, concrete ready-mix, and asphalt paving services for residential, commercial and public construction projects.

Join Our Team!

We offer great wages and benefits:

- Medical
- Paid Time Off
- Dental
- 401(K) Match
- Vision
- Profit Sharing

PLUS MORE!



320-251-9472


Knife River is an equal opportunity/affirmative action employer.

www.kniferiver.com



WestwindWoodworkers.com

320-685-4313 | 405 West Wind Court, Cold Spring

Follow us on social  



3 Beds | 2.5 Baths | 2,107 sq ft

DIRECTIONS From Northway Drive turn onto Stockinger Drive then turn right onto Forest Drive and then right again to stay on Forest Drive then left onto Forest Court.

FireplaceMinnesota Lighting, Fireplace & Flooring Showroom
Garage Doors Garage Door Store
HVAC Finken Water Treatment, Plumbing, Heating & Cooling

Lighting.....Minnesota Lighting, Fireplace & Flooring Showroom
PlumbingFinken Water Treatment, Plumbing, Heating & Cooling



320-250-4588

tylerkeller7@yahoo.com

Gorgeous new patio home with an open floor plan featuring 9' ceilings, abundance of natural light, huge kitchen island, spacious wall in pantry, stone gas fireplace, in floor heat, and owner's suite with spacious walk in closet, tile shower, and jetted tub!!! Fully finished 3 stall garage with 8' overhead doors, floor drain, in floor heat, and epoxied floor. Immediate move in available price is \$599,000. Located on a dead end cul de sac by parks, senior and aquatic center!



4 Beds | 3 Baths | 2,322 sq ft

DIRECTIONS Head East on 33rd St from County Rd 74 turn North onto Stone Gate Drive then Take immediate Right onto Nottingham Road South. Home will be on the right side of road, approximate 1/4 mile

Appliances Karl's TV & Appliance
Building MaterialsLumber One Avon
Cabinets Westwind Woodworkers
Countertops..... C&D Granite
FlooringMCI Multiple Concepts Interiors - Carpet One
Garage Doors American Door Works

HVAC .. H&S Heating & A/C Residential & Service
Insulation.....Citywide Insulation
Lighting.....MCI Multiple Concepts Interiors - Carpet One
Millwork Bayer Built
Windows.....Thermo-Tech Premium Windows and Doors



Lumber One Avon

320-356-7342

lumber-one.com

Walk into this amazing and uniquely designed two-story patio home with main level living! Home highlights include primary bedroom, primary en suite bathroom, laundry and guest room all on the main floor. This wonderful main floor also features a huge vaulted living room, a 12' wide patio door, large walk around kitchen, bar area, mudroom, as well as a large 3 stall garage. Completed in this home includes two bedrooms and a full bathroom on the second floor. This home comes with a washer and dryer, stainless-steel appliances, asphalt driveway, fully landscaped yard with an in-ground sprinkler system, and a view to a spectacular pond. Enjoy your private outdoor patio or hop over to the neighborhood pool with all your friends!



CENTRAL MINNESOTA
**BUILDERS
ASSOCIATION**

Become a CMBA Member *Today!*

- Support and join others in advocating to protect and strengthen the building industry
- Stay on top of important legislative and regulatory affairs
- Get more workers in the building trades through CMBA's Tools for Schools program
- Exchange best practices with colleagues in the building industry
- Get Builders Continuing Education with your membership
- Make valuable, professional and personal connections at CMBA meetings and social events
- Showcase your products, services, expertise and skills at community showcases like the Tour of Homes and Home Show
- Market your business services and solutions



Scan the QR Code
for a full listing of
your trusted Central
Minnesota Community
Partners for your
commercial or home
needs.



320-290-0823 • 320-309-8890
schnettlercb.com

Schnettler Custom Builders presents a unique patio home located in Deer Creek Crossing. This 2194 sq. ft. home has three bedrooms, two bathrooms, an office and a deluxe kitchen. In addition, there is an angled screened porch located off the back of the house. The exterior features Edco siding with natural cedar accents, Andersen Windows and Malarkey shingles. All this from the builder who has earned an Xcel Energy award for efficiency four years in a row!

3 Beds | 2 Baths | 2,194 sq ft

DIRECTIONS From Roosevelt Rd, go south on Cooper Ave. South. Go straight through the roundabout on 33rd. Turn Left (South) onto 21st Ave. South. Turn Right (West) onto Wildflower Road South. House will be on the right side.

| | | | |
|--------------------------|--|------------------|---|
| Appliances | Karl's TV & Appliance | Fireplace | Minnesota Lighting, Fireplace & Flooring Showroom |
| Building Materials | Simonson Lumber | HVAC | Lyon Sheet Metal and Heating |
| Cabinets | Brenny Custom Cabinets, Inc. | Insulation | McPherson Products |
| Countertops | C&D Granite | Lighting | Minnesota Lighting, Fireplace & Flooring Showroom |
| Electrical/Plumbing .. | Gilk Plumbing, Heating & AC | Windows | Andersen Windows & Doors |
| Exteriors | Simonson Lumber | | |
| Flooring | MCI Multiple Concepts Interiors - Carpet One | | |



320-230-9909
werschayhomes.com

This design-build project by Werschay Homes is a magnificent modern two-story oasis blending stunning aesthetics with everyday functionality. This timeless home is on a 7.5 acre home site in the desirable Eagles Landing Neighborhood of St. Augusta. The main level welcomes you with 11' ceilings and open concept living. Floor-to-ceiling Marvin Windows and Multi-Slide patio doors fill the space with natural light connecting indoor and outdoor living. The gourmet kitchen features Wolf and Sub-Zero appliances and a massive 12' center island. The one-of-a-kind multi-slide glass pantry doors open the prep area to the kitchen and is complimented by the custom mono steel floating staircase. The main level is finished off with an oversized owner's suite with luxurious owner's bath, an office/den with dual workspaces, and a huge laundry room. Take the stairs or the elevator upstairs to three additional bedrooms; each with its own bathroom plus an oversize Bonus/Entertainment Room. The lower level offers a Music/Listening Room, Exercise Room, and Large Mechanical/Storage Area. To compliment the 4-car attached garage, the property features a matching 4 car detached garage with a full wood shop and exquisite landscaping. Other Notable Features: Elevator/Geothermal Heating/Cooling/Cambria Countertops.

OPEN FIRST WEEKEND ONLY

5 Beds | 4.5 Baths | 5,469 sq ft

DIRECTIONS Take Cty Rd. 75/Clearwater Rd and continue straight onto Cty Rd 7 through St. Augusta, turn left onto 23rd Avenue, then turn left onto Majestic Drive. Home is on the right.

| | | | |
|----------------------------|---------------------------------------|----------------|---|
| Building Materials | Simonson Lumber | Flooring | MCI Multiple Concepts Interiors - Carpet One |
| Cabinets | Oak Hill Custom Cabinets | Millwork | Bayer Built Woodworks |
| Countertops | Granite Tops | Lighting | Minnesota Lighting, Fireplace & Flooring Showroom |
| Electrical | Bertram Electric, Inc. | Plumbing | Pipers Plumbing of Central MN |
| HVAC | Mechanical Brothers | Windows | Marvin Windows and Doors |
| Fireplace/Insulation | Metro Home Insulation & Waterproofing | | |

CO-SPONSOR



*Building homes in
Central Minnesota for over 60 years!*



Developments

New Home
Builds

Material
Supplier



Avon (320) 356-7342 • Cold Spring (320) 685-3631
www.lumber-one.com



Best Home Builder
Thank you for your vote!



3 Beds | 3 Baths | 2,450 sq ft

DIRECTIONS Travel West on MN Hwy 23 turn Right onto Grant Ave SW/Main St, turn Left onto Clarke St/Main St W, turn Right on Cty Rd 23 NW, turn Left onto 4th St NW

| | |
|--|--|
| Design..... Smart'n Construction | Insulation..... Intex Insulating Company |
| Electrical Electrical Installers, Inc. | Landscaping Smart'n Construction |
| Flooring Cold Spring Carpet | Millwork Bayer Built Woodworks |



320-597-7300

smartnconstruction.com

This stunning rambler home offers more than just a residence; it promises an elevated lifestyle. Featuring 3 bedrooms, 2.5 bathrooms, a full basement with space for 2 additional rooms and a full bathroom, and a 3-stall garage, every detail is meticulously crafted for your comfort. Indulge in the double vanity in the master bath, granite countertops, luxurious vinyl plank flooring, and a tiled shower. The main floor is handicap accessible, ensuring convenience for all. Join us and discover the seamless fusion of style and functionality in this vibrant community.



5 Beds | 3 Baths | 3,174 sq ft

DIRECTIONS Take MN-15 N and continue straight onto US-10 W. Turn Left onto Co Rd 79, turn Left onto Benton County 55/NE River Rd, turn Left onto Peace Rock Rd NW, continue onto Cove Rd NW and becomes Captains Cir NW

| | |
|--|---|
| Appliances..... Quality Appliances & TV | HVAC Precise Heating, A/C, Plumbing & Refrigeration |
| Building Materials Simonson Lumber | Millwork Bayer Built Woodworks |
| Cabinets..... Brenny Custom Cabinets | Plumbing Mechanical Brothers |
| Design..... BCI Construction, Inc. | Windows..... Simonson Lumber |
| Exteriors..... Simonson Lumber | |
| Lighting..... BCI Construction, Inc. | |



320-393-3185

www.bciconstruction.us

Awe-inspiring, custom-built 2-story home with attributes that are sure to impress anyone who appreciates fine detail. Spanning open space, custom woodwork & a master suite fit for a king; this home is designed with first-class attention. Private access to the Mississippi, over 100 acres of common space, trails and some of the highest levels of pride in ownership in the area. From the kitchen w/ quartz & butcher-block countertops & custom cabinetry, the view overlooks acres of woods & trails. The master suite has incredible views, a private bath, a walk-in shower, stand-alone tub, 10'x15' walk-in closet, & a 10'10' bonus room. An oversized double-deep garage customized with rear-facing overhead door to the backyard, plumbing for a bar/sink and plenty of space for toys. Located near area amenities & Hwy. 10. An adjoining lot is also available. Enjoy views from the sunroom, warm by the fireplace, dock your boat, hike nature trails & so much more w/o leaving the security of The Cove & this incredible home.



CENTRAL MINNESOTA
**BUILDERS
ASSOCIATION**

Free!

TOUR OF HOMES APP

Search the
app store for
"CMBA Tour"



Google Play



App Store

Use the camera on your
phone to open the app
with the QR Code



Plan your Tour of Homes trip and more!

- The Latest Tour of Homes Event Information
- All Tour Model Info & Builder Info
- Save Your Favorites, Make Notes & More!

CMBATour.com • 320-251-4382



TOUR OF HOMES

CENTRAL MINNESOTA BUILDERS ASSOCIATION



**September 13, 14, 15
September 20, 21, 22**

Friday 4:30-7 pm

Saturday & Sunday Noon-5 pm

Tour of Homes Committee

THANK YOU TO OUR SPONSORS:



David Werschay
Tour of Homes Chair
Werschay Homes, Inc.



Tour of Homes Model Pricing

Price Range/Builder Tour #
\$400,000-\$499,999

Bulow MN Inc.

207 57th Ave. SE, St. Cloud 1

DG Home & Remodeling, Inc.

3267 Old Stone Way NE, Sauk Rapids..... 2

Woodland Homes, Inc.

2104 Lindas Court, Sartell 4

Smart'n Construction

708 4th Street NW, Richmond 10

\$500,000-\$599,999

Berscheid Builders, LLC

1921 Whippoorwill Way, Sartell..... 5

Elite Development

2019 Forest Court, St. Cloud 6

\$600,000-\$749,999

Lumber One, Avon, Inc.

3013 Nottingham Road S, St. Cloud..... 7

Schnettler Custom Builders LLC

3504 Wildflower Road S, St. Cloud..... 8

BCI Construction, Inc.

6624 Captains Circle NW, Sauk Rapids 11

\$1,000,000 and Over

Werschay Homes, Inc.

2722 Lehman Court, Sartell 3

Werschay Homes, Inc.

22027 Majestic Drive, St. Augusta 9



Marty Czech
Premier Real Estate
Services - Mary Czech



Anthony Steinemann
ADS Designs



Jack Brandes
Lumber One-Avon



John Blenker
Westwood Professional
Services, Inc.



Ernie Wollak
Wollak Construction, Inc.



Pat Edelbrock
Woodland Homes, Inc.

When touring homes:
No food or drink inside homes
Wear socks • No shoes • No bare feet



INNOVATION,
PERFORMANCE,
AND BEAUTY
BUILT INTO EVERY
WINDOW.



Thermo-Tech® Premium Windows and Doors are made to your specifications to make installation hassle-free. Our products are constructed with durable, low-maintenance vinyl and feature multiple energy-saving glass packages. From experienced manufacturing and on-time delivery, to responsive customer care and exceptional value, we're the clear choice for premium windows and doors.

 **Thermo-Tech.**
Premium Windows and Doors



Your satisfaction is reflected in everything we do.

877-565-0159 • ttwindows.com



BUILDING FUTURES

How CMBA'S Tools For Schools Shapes Tomorrow's Trades Professionals

Written by Kirsten Freeman
Photos from the Central
Minnesota Builders Association

The Central Minnesota Builders Association (CMBA) is recognized as today's leading local resource for home-building contractors, suppliers and associates. However, the CMBA is equally dedicated to building for the future. The CMBA's Tools for Schools program is a prime example of this commitment, fostering opportunities for high school students to explore careers in the trades and ensuring a skilled and prepared workforce for tomorrow.

"The potential in young people today is amazing, and their future opportunities in the trades are bright!" says Wanda Schroeder, CMBA Executive Director. "The members of the CMBA want to ensure that Central Minnesota students will be equipped to discern the best fit for their future. Ultimately, this will benefit us—our community—as we will have skilled, intelligent and savvy workers and business owners in the trades."

At the heart of this initiative is the CMBA's Tools for Schools program, which inspires high school students to explore various trades through hands-on experiences and community engagement. A cornerstone event for the program is the annual Bags for Tools bean bag tournament. This event is not just a fundraiser; it is a collaborative effort that brings together students, instructors and industry professionals.

High school industrial tech students from Central Minnesota build the board sets used in the tournament, showcasing their craftsmanship in a contest that awards the best-crafted board set with a trophy. The event is open to the public, and school industrial tech instructors are encouraged to attend and network with CMBA members,

including homebuilders, associates and suppliers. This interaction helps instructors understand the current needs of the industry and how best to guide their students towards successful careers in the trades.

The variety of trades careers that students can explore is extensive. "It's not just commercial and residential construction workers; it's electrical, heating, air conditioning, banking, closing companies—so many hands are involved in building homes and growing homeownership in the state of Minnesota," Wanda explains. This breadth of opportunities is crucial because it underscores that students have a lot of opportunities in the trades to achieve a successful

and fulfilling career. For many students, working with their hands and engaging in practical, skilled trades is more appealing and suited to their strengths.

"There are very lucrative positions in the trades!" Wanda emphasizes. "Students need to understand that they don't have to go on to a four-year degree. There are great benefits to being able to do that, and they can reap the rewards of the finished product—a tangible result of their work from foundation up to the roofing and everything in between."

Tools for Schools continued on next page



Tools for Schools at Work at Becker High School

Every school year, about 200 students experience Becker High School's Woods and Construction Technology classes which benefits from the CMBA's Tools for Schools grants. The class curriculum focuses on safety, materials, tools and machines with an emphasis on cabinet making and finish carpentry, house systems and building real life usable structures. The Tools for Schools funds are used to update the miter saws, ladders and other tools the students use in the class. Up to 15% of the students who experience the Woods and Construction Technology class go on to pursue construction careers after high school according to instructor Jeff Zimmer.

Tools for Schools continued from previous page

The impact of the Tools for Schools program is impressive. "We put in requests to process grants based upon the schools' needs. Those requests go through our committee for approval. There's a variety of criteria, including how many students in that school go on to trades," Wanda explains. On average, 20 to 30 high schools participate each year, with approximately 100 students per school benefiting from the program. This means that about 3,500 students annually are exposed to the latest tools and equipment, such as CNC routers, engravers, 3D printers, and a variety of hand-held battery-operated tools.

The financial support provided by the CMBA is substantial, with between \$25,000 and \$30,000 awarded annually. The most recent Bags for Tools tournament, held on June 20, 2024, raised over \$15,000, contributing to a cumulative total of well over \$100,000 over the years. These funds are used to purchase tools and equipment tailored to each school's projects, from building Habitat for Humanity houses to constructing sheds and deer stands.

Schools also reach out to the CMBA throughout the year to request leftover building materials for various projects, such as shingles for dog houses built for the humane society or extra wiring for high school classes. This practice ensures that resources are maximized, and students gain valuable hands-on experience.

The CMBA encourages community members to contribute to the Tools for Schools program, either through monetary donations or by donating used tools. The funds raised are kept within the region where CMBA members are located, maximizing the impact on the local community and ensuring the development of the next generation of skilled tradespeople.

The CMBA's Tools for Schools program is a vital initiative that not only prepares students for rewarding careers in the trades but also strengthens the community by ensuring a steady supply of skilled workers. Through events like the Bags for Tools tournament and ongoing collaboration with educators, the CMBA is building a brighter future for Central Minnesota, one student at a time.

**TOOLS FOR
SCHOOLS**
CENTRAL MINNESOTA BUILDERS ASSOCIATION



Thank You To Our 2024 Sponsors


BAGS FOR TOOLS



MAKE YOUR HOME UNIQUELY YOURS WITH SIMONSON LUMBER



DESIGN SERVICES



ESTIMATING



DELIVERY



PURCHASING

Mathew Hall
Components

TRUSSES

Your home is an extension of your personality – a canvas waiting for your unique touch. At Simonson Lumber, we invite you to transform living spaces into expressions of individuality. Whether it's through a remodel, or a completely new home. We are here for it all. Visit our showrooms today and start the journey of making your home an extension of your personality. Your dream space is just a step away. Local Experts. Local Service. Locally Owned Shop Simonson



WWW.SIMONSON-LUMBER.COM



Interior Millwork.

With an abundance of specie & style options, and a premium, furniture-grade finish available, we make it easy to find the interior millwork to suit your upcoming project.



Find your nearest dealer online at
bayerbuilt.com

MID-STATE TILE COMPANY

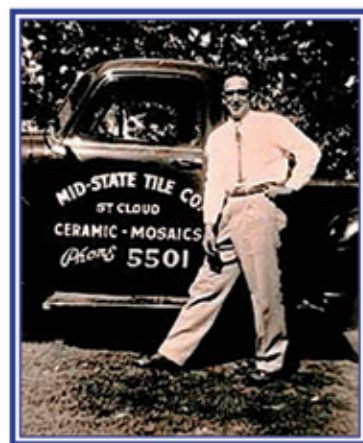
5th Generation Family owned.
92 years in business

320-252-1242

**Ceramic Tile Sales
and Installation**

Serving Entire Area Since 1931

402 Lincoln Ave. NE
St. Cloud, MN 56304



Serving the community as a family business for more than 90 years
Proud members of the Central Minnesota Builders Association
& St. Cloud Area Chamber of Commerce



Goodbye Origination Fee, Hello Dream Home.

SAVE \$1,000 AT CLOSING!

For a limited time, save up to \$1,000 when you finance a new mortgage loan with Magnifi Financial. We'll waive the origination fee on qualifying loans so you can have extra cash in your pocket for move-in day.

Our mortgage loan experts offer very competitive home loan rates and fees. We'll get you access to a variety of programs, including low and no down-payment options.



**Members rate their mortgage experience
with Magnifi 4.8 out of 5 stars.**

mymagnifi.org/welcomehome



\$5 membership share required. Certain restrictions may apply, offer available for most secondary market transactions and in-house origination fees. Offer available for all new primary residence purchase money transactions that receive a Purchase Agreement between August 15, 2024 - December 31, 2024. Not valid with any other offers. Magnifi Financial reserves the right to terminate the program at any time. This credit union is insured by NCUA.

