

Central Minnesota Homes on Tour • Find Your Dream Home Today

TOUR OF HOMES



CENTRAL MINNESOTA BUILDERS ASSOCIATION

Two Weekends!
March 20-22
March 27-29

Friday 4:30-7 pm • Saturday & Sunday Noon-5 pm

CMBATour.com



Sponsored By

Scan the QR Code. Open the CMBA Tour App on your phone.



A Custom Design Experience For Your Dream Home



Visualize your dreams.

We will bring
your plans
TO LIFE!



From plan to possibility.
Experience your front elevation or floor plan in stunning 3D!



Beauty and function expressing your personality and lifestyle

Custom home plans designed to fit your family's needs

Preferred by clients with a passion for design & detail



Any Size • Any Style
Custom Homes
Whole Home Expansions
Major Renovations
Shouse • He/She Sheds • Cabins
Bringing design to your life



Design your DREAM HOME. Contact us today.

320.248.5580 • adsdesignsmn.com • info@adsdesignsmn.com



CONSTRUCTION LOANS

made simple



Building your American Dream
is our American Heritage!



- Save thousands with one-time closing
- Lock your rate prior to construction
- Construction draws up to 18 months
- Preferred pricing for jumbo loans
- Local underwriting and loan servicing
- Also includes land and remodeling projects



AMERICAN HERITAGE BANK



TIM SMITH
NMLS# 533151
(320) 529-4230
TimS@LogBank.com

Ask me about

Homes for Heroes[®]

Our way to say Thank You
to Firefighters, Police, Teachers,
Military and Medical heroes!



Reflects terms available as of 2/4/2025. Subject to credit approval.

Infinity

Custom Home Professionals



Why Central Minnesota Families Choose Infinity Homes

Custom Design & Craftsmanship

Hand-crafted homes designed & built with uncompromising attention to detail. Our on staff carpenters ensure quality at every stage—from concept through completion.

Clear, Consistent Communication

Experienced project supervisors use proven systems to keep you informed, organized, and confident throughout the entire build process.

Local Expertise Since 2002

Trusted in Sartell and Central Minnesota. Unmatched subcontractor relationships ensure reliable scheduling and exceptional results.

Built on Referrals. Backed by Results.



Preferred Mechanical Partner

Build With Confidence.
Start the Conversation Today.

320-230-1500
Sales@InfinityMN.com
www.InfinityMN.com

Scan for Video
Testimonials



Infinity

Custom Home Professionals

DISCOVER YOUR PERFECT NEIGHBORHOOD IN CENTRAL MINNESOTA

Large acreage. Waterfront living. Golf course communities.

If you haven't secured your homesite yet, our team will help you select the setting that best fits your lifestyle.

The Preserve — Large Lots on the Watab River

- Sartell City limits with lots along the Watab River
- Spacious 1 to 4 acre lots
- Ample space for outbuildings, pools & outdoor living

Scan for Map Location



Majestic River — On the Mighty Mississippi

- Private shorefront for docks, 2+ acre lots
- Perfect for outdoor lifestyles and scenic views
- Includes shared 7 acre lot with private walking trail



Eagle Ridge — Golf Course Living

- Homesites bordering Blackberry Ridge Golf Club
- Direct cart access to the course
- Ideal for active families and golf enthusiasts



Providence — In-Town Living

- Executive style neighborhood in the heart of Sartell
- Close to parks, wading pool, dog park & walking paths
- Quiet cul-de-sac lots with mature trees



Northern Meadows — Large Acreage Lots

- Generous 1 to 3 acre lots
- No thru traffic for added privacy
- Room for outbuildings, pools & pool houses



www.InfinityMN.com



Preferred Material Supplier

320-230-1500

Sales@InfinityMN.com

Visit Us at Models #1, #3, and #13



QUALITY BUILDING AT THE RIGHT PRICE!

Whether you're looking for your first home, your dream home or your retirement home, at Woodland Homes we will build it for you and we build it right. We only work with local, reputable subcontractors with the same focus on quality craftsmanship, building materials & products.



Craig Hiltner
Realtor/Sales/Design
320.250.8800
CraigHiltner@gmail.com

Rob Klaphake • 320.230.7700
WoodlandHomesOnline.com

MN Lic. 565225

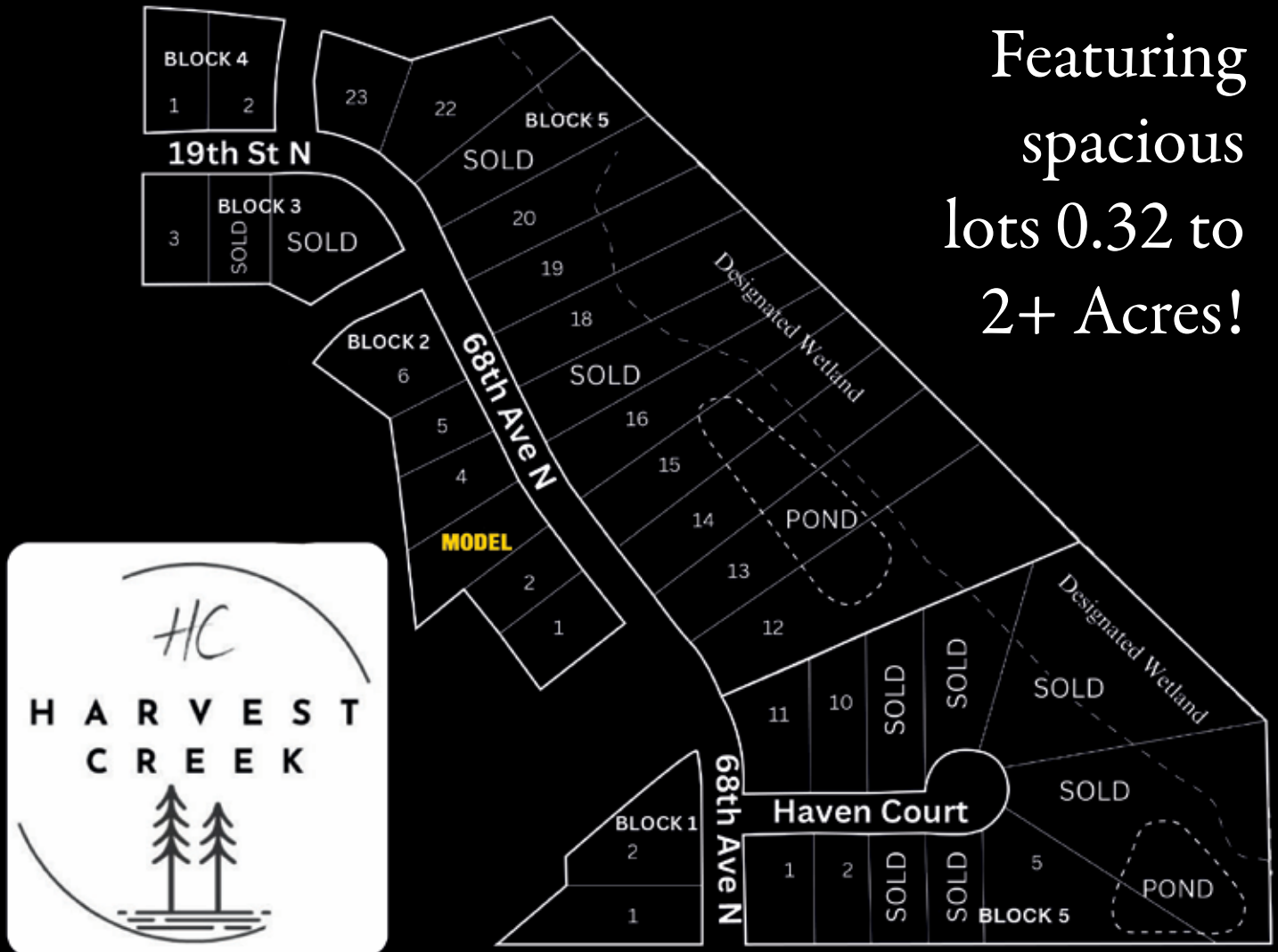


Introducing West St. Cloud's NEWEST neighborhood!

Harvest Creek

Located minutes from St. Joseph and Sartell

Featuring
spacious
lots 0.32 to
2+ Acres!



Lots priced from \$79,900 to \$119,900



Craig Hiltner
Realtor/Sales/Design
320.250.8800
CraigHiltner@gmail.com

Rob Klaphake • 320.230.7700
WoodlandHomesOnline.com

MN Lic. 565225



CONTENTS

- 9** WELCOME message from 2026 CMBA President, Greg Wensmann
- 9** 2026 CMBA Leadership
- 10** Building Trust, Leading the CMBA
- 14** Associate of the Year: Rachel Layton
- 18** CMBA Government Affairs: Building a Stronger Housing Future
- 38** Builder Bios
- 42** 2026 Tour of Homes Committee
- 43** Create Beautiful Outdoor Spaces
- 46** Advertisers Index



10 Building Trust, Leading the CMBA: Greg Wensmann



14 Rachel Layton: CMBA Associate of the Year

TOUR OF HOMES MAP
Pages 24-25

TOUR OF HOMES MODELS
Pages 26-37

TOUR OF HOMES



CENTRAL MINNESOTA BUILDERS ASSOCIATION

Two Weekends!

March 20-22 • March 27-29

Friday 4:30-7 pm • Saturday & Sunday Noon-5 pm

THANK YOU TO OUR SPONSORS:



INC.



/CMBA.MN
CMBAtour.com



@CMBAonline
CMBAonline.org



FREE APP
Search CMBA Tour

Scan the QR Code.
Open the CMBA Tour App on your phone.



WELCOME



CENTRAL MINNESOTA
**BUILDERS
ASSOCIATION**



Greg Wensmann
2026 President
Wensmann Contractors LLC

Dear Tour of Homes Guests,

Welcome, and thank you for taking part in this year's Tour of Homes. On behalf of the Central Minnesota Builders Association (CMBA), I'm excited to have you exploring the incredible homes and craftsmanship our members bring to our communities every day.

CMBA is a professional trade organization made up of builders, remodelers, developers, and the many suppliers and service providers who support them. Together, we serve as a trusted resource for homeowners looking to build, remodel, or improve their homes. When you work with a CMBA member, you're working with professionals who are committed to quality, continuing education, ethical business practices, and staying current with building codes and best practices.

At the same time, our industry is facing real challenges. Central Minnesota, like much of the country, is experiencing a housing supply shortage. We simply do not have enough homes to meet demand, especially in the entry-level and workforce housing segments. Rising material costs, labor shortages, and regulatory pressures all contribute to making housing less affordable. CMBA actively advocates for smart, practical solutions that encourage responsible growth, reduce barriers to construction, and expand access to affordable housing options for families, seniors, and young professionals alike.

To strengthen that effort, CMBA partners with Housing First Minnesota, giving our local builders and associates a larger, more effective voice at the Capitol. Together, we work to promote policies that support housing production, workforce development, and long-term affordability, ensuring that housing remains attainable for the people who live and work in our communities.

Events like the Tour of Homes are not only a celebration of great design and craftsmanship, but also a reminder of how vital the building industry is to the health of our local economy. If you or someone you know works in construction, real estate, manufacturing, building supplies, or any related field, I strongly encourage you to consider becoming a member of CMBA. Membership provides education, networking, advocacy, Tools for Schools, and a unified voice working to strengthen and protect our industry.

Thank you again for joining us today. I hope the homes you tour inspire ideas for your own projects and give you confidence in the talented professionals who build and remodel right here in Central Minnesota.

Enjoy the tour and thank you for supporting local builders and the future of housing in our communities.

Sincerely,

Greg Wensmann

President, Central Minnesota Builders Association

CMBA Officers & Directors



LANAE DEROSIER
Builder Vice President
SB Restoration Services, Inc.



Curtis Brown
Associate VP
Edward Jones



Marty Czech
Past President
Premier Real Estate
Services-Marty Czech



Stewart Swenson
Secretary
SUNCOM Development,
Construction, Management



Brianna Torborg
Treasurer
Falcon National Bank



Mitch Anderson
Director
Rinke Noonan



Jim Alvord
Director
Restore 24 LLC



Lance Barthel
Director
Batteries Plus Bulbs



Jack Brandes
Director
Lumber One, Avon Inc.



Nate Moeller
Director
Paramount Construction



Ron Molitor
Director
Rice Companies



Randy Weiher
Director
Erbauer Built, LLC

CMBA Staff



Wanda Schroeder
Executive
Director



Steve Gottwalt
Government
Affairs
Consultant



Nikki Juntunen
Executive
Assistant



Building Trust, Leading the CMBA: Greg Wensmann

Article and Photos by Kirsten Freeman

Trusted craftsmanship, stronger trades and practical advocacy for affordability.

Greg Wensmann has built a career around constructing solutions for Minnesotans, and he brings that same mindset to his role as president of the Central Minnesota Builders Association (CMBA).

Greg and his wife, Karla, own Wensmann Contractors, a Central Minnesota company known for its niche in building and remodeling lake homes as well as constructing additions, patios and decks. Their work is personal and detail-driven, shaped by the fact that every home they build, remodel or enhance is unique and every client values clear communication from day one. "We're very straightforward. We do what we say we will," Greg said.

That approach reflects how Greg views the homebuilding industry. Recent years have brought rising costs, labor shortages and shifting customer demand. "For us, especially since the start of COVID, it's been one new experience after another," he said. Through all of it, he has stayed focused on quality work, honest guidance and a process clients can trust.

Greg's path to starting their construction company began during a 28 year career managing facilities for the

Continued on next page.

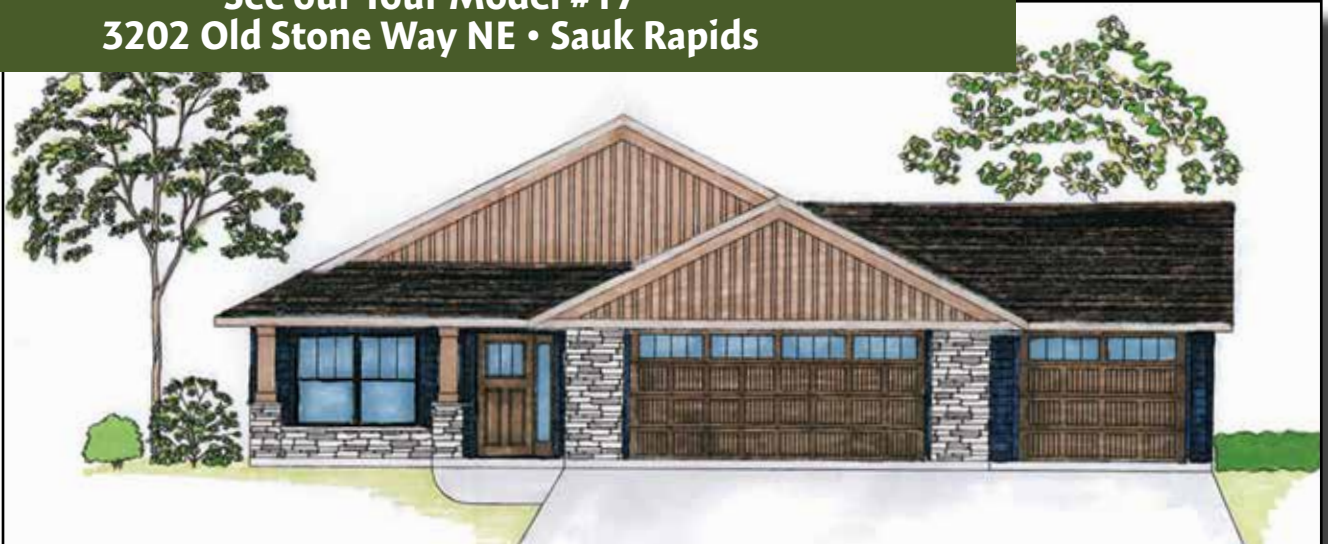
**Building & remodeling in St. Cloud
and surrounding areas for over 40 years.**



dghomes.com
320-251-9416

MN Lic: BC633099

**See our Tour Model #17
3202 Old Stone Way NE • Sauk Rapids**



A "Must See" nearly 1600 sq. ft. 2 bedroom, 2 bath patio home with a 4'-6" deep lower level storage area. Also offers an office/den with glass barn doors. Master suite with marble shower and double vanity. A large walk-in pantry/storage room. 3-stall garage with service door. No back yard neighbors...only wildlife and nature. More lots available!

Additional home and lot packages starting at \$380's

These images are not part of Tour of Homes Model #17.



We work with you on every detail! Building a new home or addition, or remodeling?
Call to schedule your **FREE CONSULTATION!**



Continued from previous page.

state of Minnesota, where he worked closely with local specialty trades. He became a licensed home builder in 2005 and went full time with Wensmann Contractors in 2012. His experience taught him the value of a strong, trusted team. "We need a lot of qualified subs to perform our projects; it can take upwards of 40 people to put a project together," he said. "With that, mistakes can happen, so we own it and fix it." That commitment to accountability is why he emphasizes working through reputable subcontractors and long term trade relationships. "Trust goes a long way," he said.

Those same values of trust and professionalism are what led Greg to the CMBA. He laughs when he remembers his early hesitation to join. He said, "I initially thought, 'Why would I want to sit at a meeting across the table from my competition?'" But after joining in 2020, he quickly discovered the opposite: the CMBA community is a competitive advantage, not a threat.

"I initially thought, 'Why would I want to sit at a meeting across the table from my competition?'" But after joining in 2020, he quickly discovered the opposite: the CMBA community is a competitive advantage, not a threat.

Through the CMBA, Greg found builders, suppliers and associates willing to openly discuss challenges and solutions. In his view, those relationships help lift standards across the industry and protect homeowners. He sees the difference every day. "You'd be amazed at how many times we go out for appointments, and the customers are dealing with unfortunate contractor issues," he said. "I would ask people if they're planning on building, remodeling or buying to check with the CMBA first to make sure you are engaging a licensed, reputable contractor."

Since he learned more about all the CMBA had to offer, Greg has been more and more involved, serving on the Tools for Schools Committee and the Government Affairs Committee, among other

events and commitments. In 2021, he was named Builder of the Year.

"Greg is an exceptionally dedicated and hands-on leader who is readily available when needed. He actively engages in events and consistently provides support and ideas, making a significant impact on both our members and the association as a whole," said CMBA Executive Director, Wanda Schroeder.

Government Affairs is now one of his top priorities as president. Greg believes practical advocacy can protect affordability and help more families reach homeownership. "I personally feel if there's any place I can make a difference, it's through our government affairs group," he said. He has already seen its impact. "We got the fire sprinkler rule pushed down, so now new homes won't incur that cost," he said, noting that dozens of other advocacy measures are in progress.

He is also passionate about strengthening the trades pipeline. "The CMBA is doing a phenomenal job of contributing to that through the Tools for Schools program," he said. One of the most successful events to support the program is the annual bags tournament where CMBA members come together for fun and fund raising. Greg enjoys seeing school instructors attend those events because it gives the CMBA a chance to build relationships and promote the trades as strong, steady careers.

Greg's leadership is grounded in family. He and Karla both attended Apollo High School and raised their three adult children who still live in Minnesota. They now have seven grandchildren. "When I get to the end of the road, the only thing I will have behind me are the memories I've made with people and the things I've taught them," Greg said, "It's important to me to have a positive impact."

As he steps into the CMBA presidency for 2026, Greg's message is focused and forward looking. "We want to continue to grow the CMBA community through educating and advocating for current members, gaining new members, and supporting government affairs efforts," he said.

To connect with trusted builders, remodelers and associates who share that commitment to professionalism, visit cmbaonline.org and use the **Find a Qualified Professional** directory.

MARVIN 



Discover the View You've Been Waiting For with Marvin Windows at Simonson Lumber!

Build better with Simonson. Whether you're remodeling, building new, or just replacing old windows, **Marvin** delivers unmatched performance, energy efficiency, and timeless design.

- ✓ Sleek, modern frames
- ✓ Energy-efficient glass
- ✓ Built to handle Minnesota weather
- ✓ Expert advice from Simonson's knowledgeable staff

Simonson Lumber of Downtown St. Cloud
127 6th Ave N, St Cloud, MN 56303



[CONTACT US](#)



320-252-1920



INFO@SIMONSON-LUMBER.COM

Rachel Layton, CMBA Associate of the Year

Article and Photos by Kirsten Freeman

Rachel Layton's Central Minnesota Builders Association story started with a simple invitation and her genuine nature to dive in and get involved.

In 2015, Rachel was working as the HR Manager for Benusa Sales & Service when a longtime connection, Rachel Gruber, now President of Dale Gruber Construction, encouraged her to attend a CMBA Remodelers Board meeting. A natural networker, Rachel was looking forward to meeting new people and learning more about the CMBA. That first meeting turned into her immediately raising her hand to do committee work, then showing up as a regular attendee and, over time, building a solid reputation for being someone builders and associate members could count on.

Her steady involvement, commitment and positive energy are key reasons Rachel was named the 2025 CMBA Associate of the Year. The moment still makes her smile. "Completely shocked," she said. "I heard them talking about the recipient and the things that person has done with the CMBA and was thinking, 'that sounds like me,' but it didn't click until they said my name."

The CMBA has been a great organization for Rachel to shine, and has been an important networking avenue for her career as well.

Rachel joined First American Title in May 2021 and now serves as a Business Development Specialist.

Continued on next page.



CENTRAL MINNESOTA
**BUILDERS
ASSOCIATION**

Publisher Information

Central Minnesota Builders Association
2848 2nd Street South Suite 145,
St. Cloud, MN 56301
www.cmbaonline.org • info@cmbaonline.org
320.251.4382
Executive Director: Wanda Schroeder

The Tour of Homes™ Magazine is the official publication of the Central Minnesota Builders Association. Neither the Central Minnesota Builders Association, Trace Creative, or advertisers will be responsible or liable for misinformation, misprints, typographical errors, etc., herein contained. No part of the magazine (advertising or editorial) may be reproduced in whole or in part without written permission from the Central Minnesota Builders Association and Trace Creative.

Magazine Publisher • Sales • Design/Creative TraceCreative

Trace Creative specializes in Brand Strategy, Marketing Consulting and Design. For more information on what Trace Creative can do for you, call **320-290-2518** or www.tracecreative.pro.

Map..... Mustang Mapping and GIS

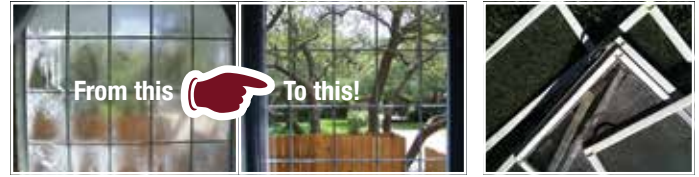


EAST SIDE GLASS

- ▶ Specializing in custom heavy glass frameless shower enclosures
- ▶ Family owned and operated since 1953
- ▶ Several full size glass showers on display in our showroom

Showroom hours
8am-5pm M-F

Over 70 Years In Business! Since 1953.



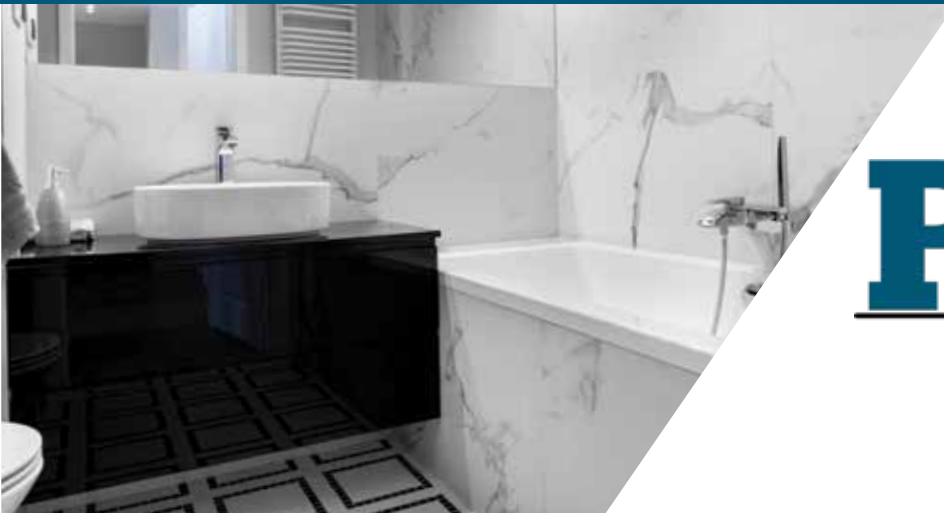
We can easily replace moisture clouded glass in your existing windows!

Screen repair is easy!

305 Franklin Ave NE • St. Cloud MN, 56304

320-251-1900

www.eastsideglass-mn.com



PIPER'S PLUMBING

of Central Minnesota
320-363-0379

**FAST. RELIABLE.
AFFORDABLE.**

Residential New Construction
Service
Light Commercial New Construction
Remodels
Tank & Tankless Water Heaters
Water Softeners

320-363-0379 • pipers@pipersinc.net • 30765 Pearl Drive, St. Joseph, MN

Continued from previous page.

She spends her days helping people understand what sets First American apart, and how the company supports agents and lenders with practical tools. "My role is centered on making sure people understand that we're not a traditional title company, and that difference truly matters," she said.

Rachel says relationships are what move business forward. "A big part of my role is relationship-building," she said. That is where the CMBA has mattered most. The organization puts builders, remodelers and associate members in the same room, gives them reasons to work together and creates trust through consistent connection.

Rachel describes her approach to advocacy in simple terms: be present and be helpful. "To me, advocacy at the associate member level is really about showing up and supporting the builders and remodelers who make up the CMBA," she said. "I try to stay involved by attending meetings, serving on committees and building real relationships so I can be a helpful resource when opportunities come up, whether that's making connections, sharing information or simply being someone they can count on."

Over the last decade, Rachel has served on multiple committees including Special Events and the Home Show Committee, where she currently stays involved. She points to the Home Show as the place where she has felt the biggest impact. "The Home Show, without a doubt," she said, "Helping strengthen that event has been meaningful because it supports the CMBA and gives the public a trusted way to connect with local experts."

She also credits CMBA staff leadership for keeping the show growing and improving. "Watching the Home Show grow and seeing what the committee and leadership has been able to accomplish has been truly inspiring," she said.

From a business standpoint, Rachel says the value of CMBA membership is clear. "First American Title has gained strong, lasting relationships with local builders," she said. "Being actively involved with the CMBA helps us better understand builders' needs

and reinforces First American as a reliable, long-term partner in the industry."

"The Home Show, without a doubt [has the biggest impact]," she said, "Helping strengthen that event has been meaningful because it supports the CMBA and gives the public a trusted way to connect with local experts."

"Rachel is genuinely a go-getter, and her commitment to our industry and association has been invaluable," said Wanda Schroeder, CMBA Executive Director, "She actively rolls up her sleeves to help us accomplish our goals. Rachel consistently steps up, offers her insights, assists in organizing events and is always present to ensure that tasks are completed and she is a joy to work with!"

CMBA involvement has also shaped Rachel's view of the industry. She developed an interest in government affairs after hearing about the challenges facing housing and how leaders navigate them. She attends Government Affairs Committee meetings and has brought that interest into other industry groups, looking for ways to build alignment and support the people doing the work.

"The CMBA does an excellent job advocating and educating," Rachel said. "They're active in communicating builders' needs to policymakers, making sure the industry's voice is heard. At the same time, they offer a wide range of ongoing educational opportunities that help members stay informed, connected and prepared as the industry continues to evolve."

Rachel hopes her story encourages others to get involved and stay with it. "I hope they see that involvement is something you build over time," she said. "It starts with showing up, getting involved and forming relationships, and it grows from there."

To learn more about CMBA members, events and trusted resources for building or remodeling in Central Minnesota, visit cmbaonline.org.



Scan the QR Code
for the CMBA
Tour App



/CMBA.MN
CMBAtour.com



@CMBAonline
CMBAonline.org

Walls & Attics
Certified Insulation Contractor
New or Existing Construction
All Types of Commercial Insulation
"Airtight" Insulation Systems
FREE Estimates

Licensed & Bonded • 320-229-0105 • 866-799-0378
1300 39th Ave. NE, Sauk Rapids, MN 56379



Find Builders & Remodelers. Get Inspired!


Welcome to the CMBA Tour of Homes

Discover your perfect home,
visit new neighborhoods,
gather design inspiration,
and see the latest in home trends.



WestwindWoodworkers.com

320-685-4313 | 405 West Wind Court, Cold Spring

Follow us on social  



Building a Stronger Housing Future

How CMBA Government Affairs helps keep homebuilding attainable in Central Minnesota by staying engaged, informed and at the table.

Article by Kirsten Freeman • Photos from the CMBA

When a family decides to build or remodel a home, they usually think about floor plans, finishes and budgets. Behind the scenes, there are other elements that factor in: the rules, fees and timelines that affect housing long before a shovel hits the ground. That is where the Central Minnesota Builders Association's Government Affairs work comes in.

The CMBA Government Affairs team helps protect the long-term health of the housing industry in Central Minnesota, with a clear goal in mind: make it easier to build more quality homes at prices more families can reach. That means paying close attention to local planning, zoning and fee changes, state laws, regulations and code updates, and other

requirements that can add cost and complexity to new construction and remodeling.

Steve Gottwalt, CMBA's Government Affairs consultant stays alert and connected, monitoring local regulatory and planning activity, sharing updates with members and representing member concerns with local officials. He serves as CMBA's registered lobbyist and coordinates state and federal efforts with Housing First Minnesota. The focus is practical. Builders and remodelers are already busy serving clients and running businesses. They cannot spend time tracking every rule change or meeting agenda. CMBA helps carry that load.

Continued on next page.



Lake Friendly
Lawn Care & Landscaping LLC
"For all Your Outdoor Needs"
lakefriendlylandscaping.com

(320) 293-7939
Outdoor Showroom
22638 191st Avenue
Richmond, MN 56368

Scan me!



- Paver Patios
- Concrete
- Decks
- Mulch & Rock



AB AMERIBUILT BUILDINGS INC.
Residential • Commercial
General Contracting • Post Frame
(320) 259-7701



Opposite Page: Swearing of Board of Directors with Bernie Perryman

Above: CMBA and St. Cloud Chamber of Commerce host event "Playbooks for Housing & Economic Growth"



MINNWEST BANK

A mortgage built just for you.

Make building easier with Minnwest Bank's Single-Close Construction Loan. One closing. One set of costs. One seamless process.

Melissa Olson
NMLS #2163794
507-993-3782

MEMBER FDIC 





Above: Day at the Capitol 2025

Continued from previous page.

In 2025, that work showed up in meaningful ways. One of the biggest wins was an agreement with area mayors to meet regularly to discuss housing issues. Those conversations matter because housing supply and affordability are critical priorities and shaped locally. CMBA also hosted sessions on the Minnesota Family Paid and Medical Leave program and new Independent Contractor tests, helping members understand what was changing and how to prepare.

CMBA continued to show up at the Capitol, too. Members took part in Housing Day at the Capitol, and the association provided letters of support and testifiers for Starter Home Act legislation. CMBA joined regional housing planning discussions,

bringing builder experience into conversations about how to increase housing supply while keeping costs in check.

Some of the most important work has real impact on home prices. In collaboration with Housing First Minnesota, CMBA helped blunt several Minnesota code changes that could have added thousands of dollars to the cost of each new home. The association also advocated for common-sense zoning reforms, including “light-touch density” ideas like smaller minimum lot sizes. These reforms create more options for housing without changing the character of a community overnight. CMBA encouraged area cities to consider covering more of the up-front infrastructure costs that can make new developments harder to start. That CMBA advocacy helps reduce unnecessary costs that can show up in bids and budgets and helps push for smarter rules that support safe construction while keeping the path to housing more attainable.

Steve points to a challenge the wider community does not always see. “People who do not understand home building are often inclined to blame builders for the supply and affordability crisis,” he said. “People need to understand builders are essential to the solution.” That is why CMBA works closely with partners like the St. Cloud Area Chamber of Commerce, the St. Cloud Area Association of Realtors, Greater St. Cloud, local building officials, local legislators and Housing First Minnesota. These relationships help bring the right people together around workable solutions. “We are also here to help members solve regulatory concerns as they develop,” said Gottwalt. “It’s important to have a go-to when you need it.”

Looking at 2026, CMBA is focusing on regulatory relief, more traction on the Starter Home Act, light-touch density reforms, efforts to grow the construction workforce and more progress on mitigating up-front development infrastructure costs. The goal is to keep housing moving forward with fewer regulatory costs and barriers, achieving better outcomes for communities.

Members who want to plug in are welcome. CMBA’s Government Affairs Committee meets the third Tuesday of every month, and members



Above: CMBA Staff at Day at the Capitol 2025

are encouraged to attend. CMBA is also signing up members for Housing Day at the Capitol on April 30, with free transportation to the event and a social activity afterward. Steve sums up why engagement matters with a reminder many in public policy live by, "If you're not at the table, you're on the menu."

To learn more about CMBA, its members and its work to strengthen housing in Central Minnesota, visit cmbaonline.org

Aggregate ♦ Asphalt ♦ Ready-Mix

Knife River delivers high quality construction materials and services throughout Minnesota. We provide aggregates, concrete ready-mix, and asphalt paving services for residential, commercial and public construction projects.

Join Our Team!
We offer great wages and benefits:

- Medical
- Dental
- Vision
- Paid Time Off
- 401(K) Match
- Profit Sharing

PLUS MORE!

KNIFE RIVER
320-251-9472

Knife River is an equal opportunity/affirmative action employer.

www.kniferiver.com

DEERWOOD BANK

Home Equity Loans

A smart way to fund renovations, consolidate debt, or cover major expenses

HELOCs

Flexible access to funds when you need them, perfect for ongoing projects

Bridge Loans

A helpful solution if you're buying before you've sold

Traditional Home Loans

Competitive mortgage options backed by local experts who know the market

Bethany Schwinghammer
Real Estate Lender
bethany.schwinghammer@deerwoodbank.com
320.257.3304
NMLS #796820

Jim Arnold
Real Estate Lender
jim.arnold@deerwoodbank.com
320.257.3317
NMLS #423382

proudly local

REMARKABLY fresh to your table.

In 1921, Chester A. Coborn opened a one-room produce store in Sauk Rapids. He prided himself on owning a local business and focused on providing his neighbors with the high-quality goods they needed. That legacy is still strong today and we've stayed true to our roots through our 103-year history in the grocery business.

Today, Coborn's is your full-service employee-owned supermarket located across Central Minnesota. We strive to serve families and neighbors through career opportunities, offering local products and supporting our communities through a long and strong tradition that started over a century ago.

We're proud to support our wonderful communities who continue to support us because when you support your locally-owned businesses, you're supporting our larger community... and we all thrive together.



Local IS FRESHER. *Fresher* IS BETTER.



©2023 Coborn's, Inc. 07/1/24

PLAN YOUR ROUTE
CMBAtour.com
FOLLOW THE SIGNS

12

TOUR OF
HOMES

CENTRAL MINNESOTA BUILDERS ASSOCIATION



No food or drink inside homes • Wear socks • No shoes • No bare feet

Scan the QR Code for the CMBA Tour App

CMBAtour.com • CMBAonline.org • INFO@CMBAONLINE.ORG • 320-251-4382



Box Store Prices From Your Hometown Dealer

Newly remodeled 8,000 sq. ft. showroom Over 500 appliances

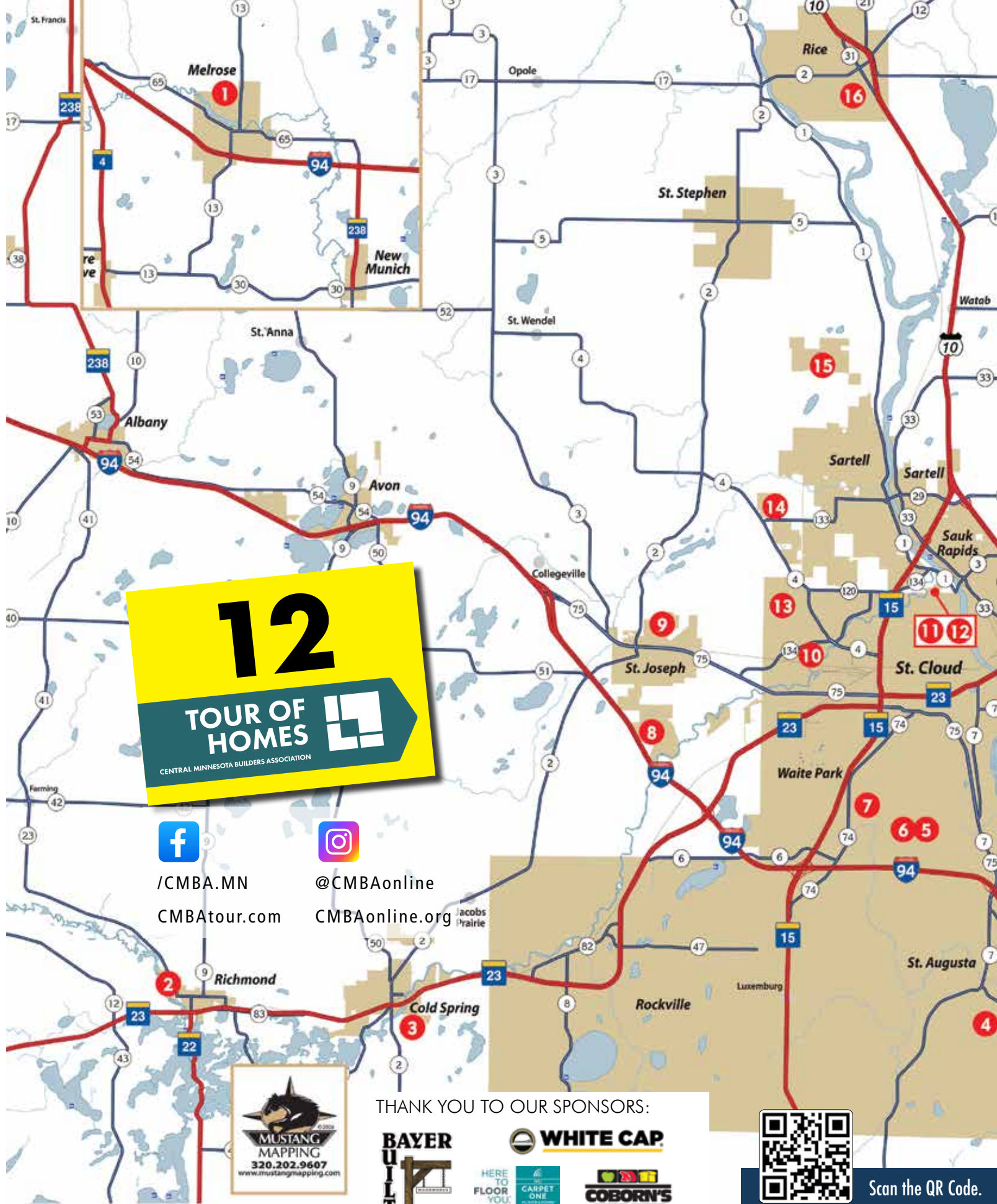


Look for our appliances in Tour Homes #1, 3, 13, & 18

Top name brands: Maytag, KitchenAid, Whirlpool & more.
Appliances for Kitchen, Laundry, Small Appliances, & Outdoor
One-On-One Service • Competitive Pricing • Delivery and Installation

63 3rd St. N.E., Waite Park, MN 56387
320-259-0220 • qualityappliancewaitepark.com

Central Minnesota's Appliance store since 1978.
Veteran Owned • 2nd Generation Family-Owned



12
TOUR OF HOMES
CENTRAL MINNESOTA BUILDERS ASSOCIATION



/CMBA.MN
CMBAtour.com



@CMBAonline
CMBAonline.org



THANK YOU TO OUR SPONSORS:



Scan the QR Code.



TOUR OF HOMES



CENTRAL MINNESOTA BUILDERS ASSOCIATION

March 20-22 and March 27-29
 Friday 4:30-7 pm • Saturday & Sunday Noon-5 pm

- 1 Woodland Homes**
 129 Highlands Boulevard NE
 Melrose
- 2 Smart'N Construction LLC**
 107 Barry Loop NW
 Richmond
- 3 Woodland Homes**
 76 Meadow Lane
 Blue Heron Heights 4th Addition
 Cold Spring
- 4 Werschay Homes**
 22097 Majestic Drive
 Eagles Landing
 St. Augusta
- 5 Schnettler Custom Builders LLC**
 3401 Wildflower Road S
 Deer Creek Crossing East
 St. Cloud
- 6 BNH Contractors Inc.**
 3408 Granite Way
 Quarry Woods
 St. Cloud
- 7 Lumber One Avon**
 3085 Nottingham Rd S
 Stone Gate
 St. Cloud
- 8 Berscheid Builders**
 1116 Lanigan Way SW
 Woodcrest
 St. Joseph
- 9 Klein Builders Inc.**
 1317 Iris Lane
 Northland Heights
 St. Joseph
- 10 Berscheid Builders**
 611 Brookwood Lane
 Sauk River Estates
 St. Cloud
- 11 Elite Development**
 2016 Forest Court
 Parkview Estates
 St. Cloud
- 12 Elite Development**
 2024 Forest Court
 Parkview Estates
 St. Cloud
- 13 Woodland Homes**
 1958 68th Avenue N
 Harvest Creek
 St. Cloud
- 14 Infinity Custom Home Professionals**
 524 Northern Meadows Lane
 Northern Meadows
 Sartell
- 15 Werschay Homes**
 2709 Lehman Court
 The Gates at Blackberry Ridge
 Sartell
- 16 Tenney Construction**
 965 3rd Avenue SW
 Walnut Ridge Plat 4
 Rice
- 17 DG Homes & Remodeling**
 3202 Old Stone Way NE
 Villages of Creekside
 Sauk Rapids
- 18 Bulow MN Inc.**
 5913 Rub of the Green Street
 The Fairways
 St. Cloud

Open the CMBA Tour App on your phone.

1 129 Highlands Blvd. NE • Melrose • KL Plat #1



3 Beds | 2 Baths | 1,705 sq ft

320-230-7700

woodlandhomesonline.com

Woodland Homes now offers convenient one level living in Melrose! This patio home offers 3 bedrooms, 2 bathrooms, and a 3 car garage with an extended 11'x28' storage area! Highlights include 3 foot wide doorways, in floor heat, vaulted ceilings, walk in closets, corner kitchen pantry, large kitchen island and granite kitchen countertops, covered front and rear porches with a 14'x14' patio! One level living at its finest. Other home and lot packages available on Highlands Boulevard or on your land.

DIRECTIONS To Melrose, from Main Street, take 2nd Avenue to W. Riverside Avenue, take right on 3rd Ave NW, turn right on W 5th St. N. then left (North) on N 1st Ave E. to Highlands Blvd.

CO-SPONSOR



Appliances	Quality Appliance Center	HVAC	Finken Water Treatment, Plumbing, Heating & Cooling
Cabinets.....	Schlangen's Custom Cabinets	Lighting	Multiple Concepts Interiors, Carpet One
Exteriors.....	White Cap & QXO	Plumbing	Finken Water Treatment, Plumbing, Heating & Cooling
Flooring	Multiple Concepts Interiors, Carpet One		
Garage Doors	American Door Works		

2 107 Barry Loop NW • Richmond • Barry Loop



2 Beds | 2 Baths | 1,552 sq ft

320-597-7300

smartnconstruction.com

This beautiful patio home by Smart'n Construction is nothing short of amazing! Come walk through this spacious 2-bedroom 2-bathroom home with a 2-stall garage. Our classic roll in tile shower with a corner seat and heated floors in the bathroom is a must see. Look closely at the details with custom cabinets and vinyl plank flooring throughout the home with carpet in the bedrooms. This home is in a HOA development in the charming town of Richmond.

DIRECTIONS Follow Hwy 23 West towards Cold Spring, turn right onto Grant Ave SW, turn left onto Main Street, turn right onto County Rd 23, turn left onto 4th Street NW, left onto Barry Ave NW, left onto Barry Loop.

CO-SPONSOR



Cabinets.....	Westwind Woodworkers	Landscaping	Smart'n Construction
Counters	C&D Granite	Millwork	Bayer Built Woodworks
Design.....	Smart'n Construction	Other.....	Lifestyle Lumber
Flooring	Cold Spring Carpet		
Insulation.....	Intex Insulating Company		

*Building homes in
Central Minnesota for over 60 years!*



Developments

New Home
Builds

Material
Supplier



Lumber One

Avon (320) 356-7342 • Cold Spring (320) 685-3631

www.lumber-one.com



Best Home Builder

Thank you for your vote!



3 Beds | 2 Baths | 1,655 sq ft

DIRECTIONS Highway 23 to Cold Spring, at lights take 3rd Avenue SE to Rookery Drive, turn right, follow Rookery Drive to Meadow Lane, turn left.

CO-SPONSOR **VOIGT JOHNSON** **Craig Hiltner**
Realtor 320.250.8800

Appliances	Quality Appliance Center	Garage Doors	American Door Works
Building Materials	Lumber One, Avon	HVAC	Finken Water Treatment, Plumbing, Heating & Cooling
Cabinets.....	Schlangen's Custom Cabinets	Lighting	Multiple Concepts Interiors, Carpet One
Exteriors.....	White Cap & QXO	Plumbing	Finken Water Treatment, Plumbing, Heating & Cooling
Flooring	Multiple Concepts Interiors, Carpet One		

320-230-7700

woodlandhomesonline.com

Walk in and appreciate the thoughtful layout and construction of this gorgeous new patio home in Cold Spring's Blue Heron Heights neighborhood! Vaulted ceilings, granite countertops & a generous sized pantry grace this elegant kitchen. Separate laundry room, tray ceiling in the primary bedroom, tile roll-in shower, cozy fireplace, in-floor heat, and covered rear porch are also a few highlights to note in this beautiful patio home! Enjoy all your living space with the ease of no stairs! Woodland Homes has many home & lot packages available in Central MN or we can build your custom home on your land.



4 Beds | 3.5 Baths | 3,899 sq ft

DIRECTIONS South on Roosevelt Rd/Cty Hwy 75, turn left onto 23rd Ave, turn left onto Majestic Drive.

Building Materials	Simonson Lumber	Flooring	MCI Multiple Concepts Interiors - Carpet One
Concrete	Consolidated Contracting	Insulation.....	Intex Insulating Company
Countertops	Granite Tops	Landscaping.....	Nature's View Landscaping
Electrical.....	Mechanical Energy Systems	Millwork	Bayer Built Woodworks
Excavating	J&S Excavating	Plumbing	Pipers Plumbing of Central MN
Fireplace	Metro Home Insulation & Waterproofing	Windows.....	Marvin Windows and Doors

320-230-9909

werschayhomes.co

Werschay Homes delivers a masterpiece by tucking this storybook two-story farmhouse in the trees on this stunning acreage homesite in Eagles Landing, Central Minnesota's only estate living community. The welcoming front porch and stunning backdrop set this stage as you walk-thru the doors to find an abundance of huge Marvin Windows capturing the 360° view only nature can provide. The windows flood the home with natural light, the two-story great and enormous stone fireplace delivers volume the homesite demands and the solid nail-down white-oak plank flooring bring warmth and consistency. A mix of white oak and painted cabinets with a huge island and chefs grade appliances make the kitchen the center of the home flanked by the coziest screen room you will find that sits back in the oaks. Build Different.

LOCAL LENDING POWER FOR NEW CONSTRUCTION, REMODELS, AND MORE

Whether you're building your dream home, planning a major remodel, or buying an existing home, Falcon National Bank is your one-stop mortgage solution.

- Construction loans up to 90% appraised value
- Conventional, FHA, VA, Rural Development loans
- Bare land financing
- Local team, personal guidance

Talk with a Mortgage Banker today and experience the power of local lending done right.



Jeb Willis
SVP of Mortgage Banking
NMLS #789498
320.968.6195
jwillis@falconnational.com



5

3401 Wildflower Road S • St. Cloud • Deer Creek Crossing E



3 Beds | 2 Baths | 1,755 sq ft

DIRECTIONS Head South on Cooper Ave S straight through the roundabout at 33rd St. and continue onto Cooper Ave S. Turn right on Wildflower Rd S. The house is on the right.



320-309-8890
jason@schnettlercb.com
dan@schnettlercb.com

Bright and airy, this custom home offers 3 bedrooms and 2 bathrooms, with a proven floor plan designed for everyday living and entertaining. The owner's suite is privately located and includes a large walk-in closet and a private bath with a walk-in tile shower. The great room showcases over ten-foot ceilings and a modern electric fireplace. The everyday entry provides generous storage and a planning/computer desk. The south-facing front fills the space with abundant natural light. Additionally, the insulated 3-car garage offers ample storage for vehicles and other items. The home features custom cherry cabinets and millwork, stone countertops, tile showers, and luxury vinyl plank (LVP) flooring. The neighborhood includes association lawn care and snow removal. From a builder recognized with energy efficiency awards for the past four years.

CO-SPONSOR



Appliances	Karl's TV & Appliance	Flooring	MCI Multiple Concepts
Building Materials	Simonson Lumber		Interiors - Carpet One
Cabinets.....	Brenny Custom Cabinets	HVAC	Lyon Sheet Metal and Heating
Countertops	C&D Granite	Insulation.....	McPherson Products
Design.....	Schnettler Custom Builders	Windows.....	Andersen Windows and Doors

6 3408 Granite Way • St. Cloud • Quarry Woods



6 Beds | 3.5 Baths | 3,700 sq ft

DIRECTIONS Head South on Hwy 15, Take 33rd exit and head West on 33rd St S., Turn South on Oak Grove Rd SW, Turn East onto 34th St S., Turn onto Granite Way.

Appliances	Karl's TV & Appliance	Flooring	MCI Multiple Concepts Interiors - Carpet One
Building Materials	St. Rosa Lumber	HVAC	H&S Heating, A/C, Electrical & Plumbing
Cabinets.....	Alpine Cabinetry	Insulation.....	McPherson Products
Design.....	BNH Contractors, Inc.	Millwork	St. Roasa Lumber/Bayer Built Woodworks
Electrical.....	Bertram Electric	Windows.....	St. Rosa Lumber/Andersen Windows and Doors
Excavating	J&S Excavating		
Exteriors.....	QXO		



320-290-1971
bnhcontractors.com

The home is a fully finished 3650 Sq ft, 6 bedroom, 3 1/2 bath walkout rambler. A fully finished heated garage with an Epoxy floor. It has a screened in deck off the dining room and a concrete patio below. The kitchen, pantry (with sink), master bath, and bar have quartz counter tops. The open concept main floor has a vault with a floor to ceiling electric fireplace. The basement has a floor to ceiling gas fireplace. The master suite has a dual bowl vanity with a walk-in tile shower and a large walk-in closet with custom shelving. Main level laundry with the option for a stackable washer/dryer in the lower level.

7 3085 Nottingham Rd S • St. Cloud • Stone Gate



3 Beds | 2 Baths | 1,852 sq ft

DIRECTIONS Head East on 33rd St S. from County Road 74 turn left onto Stone Gate Drive & then take immediate right. Home will be on left side of the road

Building Materials	Lumber One Avon	Garage Doors	American Door Works
Cabinets.....	WestWind Woodworkers	HVAC	H&S Heating, A/C, Electrical & Plumbing
Counters	C&D Granite	Insulation.....	City Wide Insulation
Design.....	Lumber One Avon	Plumbing	H&S Heating, A/C, Electrical & Plumbing
Exteriors.....	Ruege Construction	Windows.....	Thermo-Tech Premium Windows & Doors
Flooring	Multiple Concepts Interiors, Carpet One		



320-356-7342
lumber-one.com

This beautifully crafted patio home by Lumber One Avon combines comfort, style, and quality in every detail. Featuring 3 spacious bedrooms, 2 modern bathrooms, and a 3-stall garage, this home is designed for easy living. The open-concept layout highlights a large kitchen with granite countertops that flows seamlessly into the living area and overlooks a serene pond, perfect for relaxing or entertaining. An electric fireplace adds warmth and charm, while the tiled shower delivers a spa-like touch. Thoughtfully designed and expertly built, this home offers low maintenance living without sacrificing luxury.

- Construction Loans with Multiple Lock In Options
- Single Close Construction Loans
- EZ Start First Time Homebuyer Loans
- Affordable Housing Programs
- Down Payment Assistance Options
- Interest Rate Buy Down Programs
- Bridge Loans
- Home Equity Loans
- Home Equity Lines of Credit
- Debt Restructuring Plan Loans
- Local Processing, Underwriting and Servicing



Your Mortgage Lender for Your New Home.



And Much, Much More!

Liberty Bank Minnesota: Saint Cloud | Waite Park | Sartell | Monticello | Big Lake
 Office: 320-252-2841 | 888-850-2265 | libertybankmn.com | NMLS# 411232



Member
FDIC

Disclaimer:
This is not an offer to lend. Programs are subject to change. Please consult with one of our Mortgage Loan Officers for additional information on our various loan programs.

8 1116 Lanigan Way SW • St. Joseph • Woodcrest



3 Beds | 2 Baths | 1,852 sq ft

DIRECTIONS Go West on Hwy 23, turn left onto County Rd 138, at roundabout take the 1st exit onto 2nd St S, turn right onto Cty Rd 121, turn left onto Lanigan Way SE.

Berscheid Builders

Residential • Remodeling

320-255-1412
berscheidbuilders.com

Inspired by classic Craftsman design, this 3 BR , 2-bath patio home offers 1,852 square feet of thoughtfully designed living space. An eye-catching archway leads from the dining area into a sun-filled room anchored by a striking stone fireplace, seamlessly bringing warmth inside. The spacious pantry is strategically placed for everyday convenience and entertaining. The private master suite features an expansive walk-in closet thoughtfully separated from the master bathroom for added functionality. Berscheid Builders' signature Built in Excellence is showcased throughout: a large island with leathered quartz countertop, ceramic tile walk-in shower, luxury vinyl and ceramic flooring, rustic oak cabinetry, and solid mission-style doors with sleek black hardware. Vaulted and tray ceilings enhance the open feel, while the expansive three-car garage adds practicality. Located near Woodcrest Country Manor, minutes from St. Joseph and St. Ben's campus.



CO-SPONSOR

Appliances	Karl's TV & Appliance	Exteriors.....	QXO
Building Materials	Simonson Lumber	Garage Doors	American Door Works
Cabinets.....	WestWind Woodworker	Gutters.....	Full-Fledged Distribution
Counters.....	Central Marble Products	HVAC/Plumbing.....	Mechanical Energy Systems
Design.....	ADS Design	Windows.....	Marvin Windows and Doors
Electrical.....	Mechanical Energy Systems		



3 Beds | 2 Baths | 1,688 sq ft

DIRECTIONS Go west on Division Street, turn right onto Northland Drive, turn right onto Iris Lane NE.



320-356-7233

kleinbuildersmn.com

Impeccably designed new-construction patio home offering 3 bedrooms, 2 baths, and oversized 3-stall garage with floor drain. Step through the covered front porch into an open-concept showcasing 9-ft ceilings and durable vinyl plank flooring throughout. The kitchen impresses with custom knotty alder cabinetry, quartz countertops, a spacious center island, stainless steel appliances, and a walk-in pantry with built-in counter space that doubles as a safe room. The dining area flows seamlessly to a screened porch and concrete patio - ideal for indoor/outdoor entertaining. Relax in the inviting living room with a floor-to-ceiling stone electric fireplace. A full guest bath adds functionality, while the luxurious owner's suite offers a spa-inspired en-suite with roll-in tiled shower, dual-sink vanity, and a large walk-in closet. Enjoy a dedicated laundry room with washer/dryer, sink, and cabinetry. Exterior features include maintenance-free steel siding with stone accents, concrete drive, in-ground sprinklers, and fully seeded and landscaped yard.

Building Materials	Lumber One Avon	HVAC	Mechanical Energy Systems
Concrete	Klein Builders	Plumbing	Pipers Plumbing of Central MN
Exteriors.....	White Cap	Window	Thermo-Tech Premium Windows & Doors



3 Beds | 2 Baths | 1,860 sq ft

DIRECTIONS North on Hwy 15, turn left onto 8th St. N, turn left onto Ridgewood Rd/Cty Hwy 134, turn left onto Saukview Dr, turn left onto Rivers Edge Dr, turn left onto Brookwood Lane.



320-255-1412

berscheidbuilders.com

A welcoming covered porch sets the stage for this thoughtfully crafted patio home by Berscheid Builders, LLC, where farmhouse character blends beautifully with Craftsman-inspired design. This 3-bedroom, 2-bath home offers 1,860 square feet of well-appointed living space, highlighted by 9-foot ceilings and expansive windows. A bright foyer with coat closet introduces the open layout. A flexible guest suite provides the perfect space for visitors, a home office, or hobby room. The kitchen showcases rustic knotty alder cabinetry, a striking granite island, and spacious walk-in pantry—designed for both everyday living and entertaining. The great room features a sleek electric fireplace adding warmth and style. The owner's suite serves as a peaceful retreat with spa-inspired tiled shower, walk-in closet, and convenient laundry access. A sunroom offers year-round outdoor views, while the concrete patio is ideal for grilling and entertaining. This home perfectly blends comfort, craftsmanship, and flexibility.

Appliances	Karl's TV & Appliance	Electrical	Mechanical Energy Systems
Building Materials	Simonson Lumber	Exteriors.....	QXO
Cabinets.....	WestWind Woodworker	Garage Doors	American Door Works
Counters.....	Central Marble Products	Gutters.....	Full-Fledged Distribution
Design.....	ADS Design	HVAC/Plumbing.....	Mechanical Energy Systems

CO-SPONSOR





Front Elevation

3 Beds | 3 Baths | 1,943 sq ft

DIRECTIONS Follow Hwy 15 North, turn right onto 12th St N, turn left onto 29th Ave N, turn right onto Park Dr, turn right onto 19th St N, turn right onto Forest Drive, left onto Forest Court.

CO-SPONSOR



320-250-4588

tylerkeller7@yahoo.com

Beautiful new one level home with open floor plan featuring 9' ceilings, high end plank flooring, heated floors, and extra-large windows for an abundance of natural light. Dream chef's kitchen with oversized island, granite counter tops, custom cabinets, and walk in pantry! Living room has stunning floor to ceiling stone gas fireplace, vaulted ceiling, and chic ceiling fan! The master suite features oversized walk-in closet with no-step wal-in tile shower, and dual sinks! The finished garage is extra deep, has 8' garage doors, floor drain, in-floor heat, hot/cold water hook up and epoxy floor! Full landscape package with in-ground sprinklers, poured concrete curbing, paver patio, shrubs, and trees! Located across from Whitney Senior Center. The development features 10 premium lots on a dead end cul-de-sac. Easy access to Hwys. 15 and 10, grocery shopping, and St. Cloud Hospital. Phenomenal location! One lot remaining for custom home packages to customize their own home!

Appliances	Karl's TV & Appliance	HVAC	Finken Water Treatment,
Cabinets.....	Brenny Custom Cabinets		Plumbing, Heating & Cooling
Fireplace	Minnesota Lighting, Fireplace,	Plumbing	Finken Water Treatment,
	Flooring Showroom		Plumbing, Heating & Cooling
Flooring	Elite Development	Windows....	Thermo-Tech Premium Windows & Doors



3 Beds | 3 Baths | 2,453 sq ft

DIRECTIONS Follow Hwy 15 North, turn right onto 12th St N, turn left onto 29th Ave N, turn right onto Park Dr, turn right onto 19th St N, turn right onto Forest Drive, left onto Forest Court.

CO-SPONSOR



320-250-4588

tylerkeller7@yahoo.com

Premier one-level home features open floor plan, 9' ceilings, high-end plank flooring, heated floors, and oversized windows that flood home with natural light. The chef's kitchen boasts a 10' island, granite countertops, custom cabinetry, and a walk-in pantry. The living room is anchored by a floor-to-ceiling stone gas fireplace, vaulted ceiling, and chic ceiling fan. Retreat to the luxurious primary suite, complete with a expansive walk-in closet featuring built-in dressers and a center island. The spa-like bathroom includes a custom walk-in tile shower, jetted tub, dual sinks, and premium finishes throughout. The fully finished, oversized garage is truly exceptional with 48' depth, 8' tall insulated doors, in-floor heat, floor drain, hot and cold-water hookups, and a durable epoxy floor. A full landscaping package featuring in-ground sprinklers, poured concrete curbing, a paver patio, shrubs, and trees. Development is located across from Whitney Senior Center and features 10 premium lots on a dead end cul-de-sac. Easy access to Hwys. 15 and 10, grocery shopping, and St. Cloud Hospital. One lot remaining for custom home packages to customize their own home!

Appliances	Quality Appliance Center	Plumbing	Finken Water Treatment,
Garage Doors	Garage Door Store		Plumbing, Heating & Cooling
HVAC	Finken Water Treatment,	Windows....	Thermo-Tech Premium Windows & Doors
	Plumbing, Heating & Cooling		



320-230-7700

woodlandhomesonline.com

Welcome to West St. Cloud's newest neighborhood - Harvest Creek! This model home is positioned on a half acre lot with stunning sunset views! A patio home designed with extra space and functionality in mind, it offers an upper level bonus room layout. With 3 bedrooms on the main level, the upper level bonus room and bathroom could easily be used as a 4th bedroom suite. Vaulted ceilings, timeless custom maple cabinetry and trim, granite kitchen countertops, a cozy fireplace, and convenient storage space will make you feel right at home! Additional lots and build packages are available in this neighborhood.



3 Beds | 3 Baths | 2,320 sq ft

DIRECTIONS Take County Rd 4, Veteran's Drive Northwest to 322nd Street, turn left (West), to 68th Avenue N, turn South, follow to home.

CO-SPONSOR **Craig Hiltner**
Realtor
320.250.8800

Appliances	Quality Appliance Center	Garage Doors	American Door Works
Building Materials	Lumber One Avon	HVAC	Finken Water Treatment, Plumbing, Heating & Cooling
Cabinets.....	Schlangen's Custom Cabinets	Lighting	Multiple Concepts Interiors, Carpet One
Exteriors.....	White Cap & QXO	Plumbing	Finken Water Treatment, Plumbing, Heating & Cooling
Flooring	Multiple Concepts Interiors, Carpet One		



320-230-1500

infinitymn.com

Step inside to an inviting open concept main level, where a spacious living area is bathed in natural light perfect for both everyday living and entertaining. The kitchen is a true centerpiece, featuring quartz countertops, a quartz backsplash, a larger center island, and seamless connectivity to the dining and living spaces. Upstairs, you'll find generously sized bedrooms, including a luxurious owner's suite complete with a walk in closet and a curbless tiled shower designed for comfort and style. The 3 stall insulated garage offers exceptional functionality with tall overhead doors, floor drains, and 408 sq. ft. of cold storage above - ideal for seasonal storage or hobbies. Set on an expansive private lot, this home provides ample space to add a future 3,000 sq. ft. shed and even accommodate an in-ground pool, offering endless possibilities for outdoor living. Quality, craftsmanship, and attention to detail that defines an Infinity Homes build.




5 Beds | 3.5 Baths | 3,051 sq ft

DIRECTIONS North on Hwy 15, turn left onto 8th St N, roundabout take 2nd exit onto County Rd 4, at next roundabout take the 1st exit onto 6th St S, turn left onto Northern Meadows Lane.

CO-SPONSOR **Simonson Lumber**

Appliances	Karl's TV & Appliance	Garage Doors	American Door Works
Building Materials	Simonson Lumber	HVAC	Lyon Sheet Metal & Heating
Cabinets.....	Alpine Cabinets	Insulation.....	McPerson Products
Counters	C&D Granite	Landscaping	Cutter's Lawn and Landscape
Design.....	ADS Design & Infinity	Millwork	Trimpac
Flooring/Lighting	Multiple Concepts Interiors, Carpet One	Windows.....	Marvin Windows & Doors



LIC: BC266520

SERVICES

Design | Material Supply
Wall Panel & Truss Manufacturing
Project Management | Construction

ST. ROSA LUMBER INC.



AMERICAN DOOR WORKS
A RECHTOLD FAMILY COMPANY

Enhance the style and security of your home.

"It's so much more than a garage door"

Garage Doors • Garage Door Service & Repairs
Garage Screen Doors • Garage Door Openers & Accessories




www.americandoorworks.com
320-253-1310

15 2709 Lehman Crt • Sartell • The Gates at Blackberry Ridge



DIRECTIONS North on Hwy 15, turn left onto County Hwy 1, at roundabout take the 2nd exit onto Riverside Ave, turn left onto 27th St N, at roundabout take 2nd exit onto 27th St N, turn right onto 27th St N.

WERSCHAY
HOMES

320-230-9909
werschayhomes.com

Welcome to the Wedge. Werschay Homes' newest model home nestled up-to the golf course, just inside the Gates. The Exterior of the home leans traditional with huge Marvin Windows and strong roof lines creating a storybook look. The interior is definitely rustic farmhouse with large wire brushed beams, stone, authentic nail down white oak plank flooring, and plenty of shiplap. Some of the many amazing features include; Bayer Built white oak 8' interior doors, wine display feature wall blending Glass/Beams/Stone, a color drenched walk-thru pantry, vaulted owner-suite with accent wall, screen room with I.R. heaters, lower level entering space with walk-up bar and entertainment area, custom made white oak and painted cabinets, golf cart garage door. You will see and feel the quality craftsmanship in every inch of this Werschay home. Build Different.

Building Materials	Simonson Lumber	Flooring	MCI Multiple Concepts
Concrete	Consolidated Contracting		Interiors - Carpet One
Countertops	Granite Tops	Insulation.....	Intex Insulating Company
Electrical	Mechanical Energy Systems	Landscaping.....	Nature's View Landscaping
Excavating	J&S Excavating	Millwork	Bayer Built Woodworks
Fireplace	Metro Home	Plumbing	Pipers Plumbing of Central MN
	Insulation & Waterproofing	Windows.....	Marvin Windows and Doors



4 Beds | 2 Baths | 1,976 sq ft

DIRECTIONS Follow Hwy 10 north towards Rice, turn left on 105th Street NW, turn right on River Rd NE, turn left onto 8th St SW, left onto 3rd Ave SW.



320-224-9663

tenneyconstructionservices.com

A beautiful 1.5 story home featuring 4 bedrooms and 3 bathrooms. Tile flooring in bathrooms, including a tiled tub surround and a stunning master tile shower. The kitchen offers custom cabinetry paired with elegant quartz countertops. Situated on a spacious 1/3 acre lot, there's plenty of room for kids to play and room for a fire pit to enjoy outdoor living. The 3 stall heated garage includes custom cabinets for ample storage. The upstairs features a loft, providing the perfect space for kids to relax and enjoy their own time.

Appliances	Karl's TV & Appliance	Excavating	Burski Excavating
Building Materials	Simonson Lumber	Millwork	Simonson Lumber/ Bayer Built Woodworks
Cabinets/Closet Organization	JH Cabinets	Windows.....	Simonson Lumber/ Andersen Windows
Design.....	ADS Design		



2 Beds | 2 Baths | 1,588 sq ft

DIRECTIONS Country Rd 3 & Mayhew Lake R go north to County Road 29 (35th St. NE). Go east to Old Stone Way NE then right for 1 block. House in on right.



320-251-9416

dghomes.com

A "Must See" nearly 1600 sq. ft. 2 bedroom, 2 bath patio home with a 4'-6" deep lower level storage area. Also offers an office/den with glass barn doors. Master suite with marble shower and double vanity. A large walk-in pantry/storage room. 3-stall garage with service door. This home includes steel siding, sprinkler system, sod, concrete drive and no back yard neighbors...only wildlife and nature. More lots available!

Appliances	Karl's TV & Appliance	Flooring & Lighting.....	Multiple Concepts Interiors, Carpet One
Bath Enclosures	Central Marble Products	Garage Doors	American Door Works
Building Materials/Millwork.....	Simonson Lumber	Insulation.....	McPherson Products
Cabinets/Counters	Brenny Custom Cabinets	Landscaping.....	DG Homes & Remodeling
Concrete	Knife River	Windows.....	Andersen Windows
Electrical/HVAC.....	Mechanical Energy Systems		
Excavating	J&S Excavating		

CO-SPONSOR



proudly local

REMARKABLY fresh to your table.

In 1921, Chester A. Coborn opened a one-room produce store in Sauk Rapids. He prided himself on owning a local business and focused on providing his neighbors with the high-quality goods they needed. That legacy is still strong today and we've stayed true to our roots through our 103-year history in the grocery business.

Today, Coborn's is your full-service employee-owned supermarket located across Central Minnesota. We strive to serve families and neighbors through career opportunities, offering local products and supporting our communities through a long and strong tradition that started over a century ago.

We're proud to support our wonderful communities who continue to support us because when you support your locally-owned businesses, you're supporting our larger community... and we all thrive together.



Local IS FRESHER. *Fresher* IS BETTER.



18

5913 Rub of the Green Street • The Fairways 5th Add • St. Cloud



4 Beds | 3 Baths | 2,002 sq ft

DIRECTIONS From the west take Hwy. 23 to 14th Ave SE. Turn right, which turns into 2nd Street SE. Turn Left on 55th Ave. SE. Turn right on 2nd Street SE. Right on Rub of The Green Street. House is on the left.



612-219-8020
bulowinc.com

This elegant 2-story home has 2002 finished sq. ft., 4 BR, 3 bathrooms, 3 car garage. Located on Territory Golf Course. The white custom cabinets include a large pantry located near the back entry bench. The center island has a pull out garbage next to the pots and pans drawers that keep everything at your fingertips. The granite countertops add so much elegance to this kitchen! Upstairs the owner's suite has a large walk-in closet, and a private bath with double sinks in granite countertops. 2 more bedrooms upstairs with spacious closets and a full bathroom. The laundry room is on the 2nd floor for your convenience. The main floor bedroom can easily be converted into a home office if you prefer. The fully finished & insulated 3-car garage has 8ft. tall garage doors and a service door to the back yard. Enjoy the beautiful view of the golf course from the 14'x12' screen porch and/or the adjacent concrete patio. The lot is landscaped with a full coverage sprinkler system, shrubs and sod. The concrete driveway and entryway sidewalk to the front porch speak to the quality of the home.

Appliances	Quality Appliance Center	Insulation	Metro Home Insulation & Waterproofing
Counters	Custom Stone Interiors	Millwork	Bayer Built Woodworks
Garage Doors	Metro Home Insulation & Waterproofing	Windows.....	Thermo-Tech Premium Windows & Doors



Berscheid Builders

Rick Dingman
MN: BC638971
25 86th Street NW
Rice, MN 56367
320-255-1412
rick@berscheidbuilders.com
berscheidbuilders.com

Berscheid Builders is comprised of a very skilled team of job supervisors, carpenters and sub-contractors that set us apart from any Central MN Builder. The experienced carpenters are the backbone of Berscheid Builders and take great pride in their work and carry the reputation of the company. Berscheid Builders is above all quality driven and exudes an excellent reputation in the local community.

Homes #8, #10



BNH Contractors

Jamie Huls
MN: BC636536
14964 Fenwood Lane
Cold Spring, MN 56320
320-290-1971
hulsjamie@hotmail.com
bnhcontractors.com

Here at BNH contractors, we are a residential home contractor who has been around for 20+ years with hands on experience in many different trades. We know what it takes to get the best overall outcome on your project down to the smallest detail. We focus on attention to detail and quality craftsmanship. We take pride in giving you, the customer, everything you envision while making every space functional. We can do anything from full customization to your traditional home styles. We look at cost effective ways to give you the home you envision.

Home #6



Bulow Mn, Inc.

Chris & Linda Bulow
MN: BC741984
11690 95th St. NE
Otsego, MN 55330
612-219-8020
bulowind@gmail.com
bulowinc.com

Chris and Linda Bulow work as a team to build a wide range of homes with a special focus on one level living. Our goal is to provide outstanding customer service to you throughout the build of your home. We have a strong interest in the building industry and a long history of residential building and development expertise at Bulow MN, Inc. We will guide you through the process from start to finish.

Home #18



DG Homes & Remodeling, Inc.

Don Girtz
Mn: BC633099
P.O. Box 608
Sauk Rapids, MN 56379
320-251-9416
don@dghomes-remodeling.com
dghomes-remodeling.com

Building and remodeling has been a passion for Don and his staff at DG Homes & Remodeling since starting his business over 40 years ago. With the industry changing and constantly making things better, Don and staff stay deeply involved. "Hi, this is Don. What also keeps us going strong and still growing is the great feeling of accomplishment you get when you know you're doing your very best, and above that the rewarding appreciation received by our clients as their projects are being completed. Check us out and become part of our family of friends. Thank you! We hope to hear from you soon."

Home #17



Elite Development, LLC
 MN: BC711080
 544 24th Avenue North
 St. Cloud, MN 56303
320-250-4588
 tylerkeller7@yahoo.com
 www.elitedevelopmentmn.com

Elite Development strives to deliver the best possible building experience with over 40 years of experience in the real estate, construction, and development industries. We have the ability to provide you with a seamless transaction. We believe the best way to build a home is to be honest and upfront. We will take the time to meet with you and assess your wants and needs; then sit down with a designer to create the best possible home plan for you. We are involved and hands on with each and every home that we build. We consistently monitor progress and make sure that our clients are kept up to date and involved in all decision-making processes.

Home #11, #12



Infinity Homes
 Jeremy Legatt
 BC315574
 PO Box 262
 Sartell, MN 56377
320-230-1500
 sales@InfinityMn.com
 InfinityMn.com

Infinity Homes has been designing and building custom homes for over 24 years. Through decades of hands-on experience, we have earned a reputation as one of the region's most trusted, detail-driven architectural home designers and builders. We understand that a custom home is often the largest investment our clients will make, which is why trust, integrity, professionalism, and proven performance guide every project. As a full turnkey builder, we lead clients from initial concept and design through permitting, construction, and move-in. Our process emphasizes thoughtful planning, clear communication, and early decision-making to ensure accurate pricing, efficient timelines, and exceptional craftsmanship. From energy-efficient designs and smart layouts to material selection and finish quality, every home is tailored to reflect our clients' lifestyle and priorities. Our goal is simple: deliver a home you're proud of—and an experience you'd confidently recommend to your family and friends.

Home #14



Klein Builders, Inc.
 Mark J. Klein
 Mn: Bc008830
 15703 Fruit Farm Road
 St. Joseph Mn 56374
320-356-7233
 kleinbuildersmn@gmail.com
 kleinbuildersmn.com

Mark Klein has been building new custom homes in Central MN for 43 years. He is on the jobsite throughout the building process from start to finish. Klein Builders is dedicated to providing excellent quality, value and craftsmanship to all of their homes. Working closely with their clients ensures satisfaction and completion of their dream homes. They pride themselves on happy clients, repeat business and building homes that last a lifetime.

Home #9



Lumber One Avon
 Jack Brandes
 MN: BC001820
 101 2nd St. NW
 Avon, MN 56310
320-356-7342
 jbrandes@lumber-one.com
 lumber-one.com

Lumber One Avon has been building homes in Central Minnesota for over 60 years. Our full service building center includes a retail lumber yard, interior design services, drafting services, and a retail hardware store and showroom. We pride ourselves on using the highest quality materials and experienced trade contractors. At Lumber One, we strive to bring honesty and integrity to all our interactions with customers, suppliers and coworkers. Check out our website for one of our many plans and info on all our developments.

Home #7



Schnettler Custom Builders

MN: BC374693
2137 Tamarack Drive
St. Cloud, MN 56301
320-309-8890
320-290-0823
jason@schnettlercb.com
dan@schnettlercb.com
schnettlercb.com



Schnettler Custom Builders has been designing and building high-quality custom homes in Central Minnesota for over 40 years. We're known for creative design solutions and exceptional client involvement, with many repeat customers over the years as our clients' housing needs change. From concept to completion, we prioritize meticulous craftsmanship, stunning curb appeal, and energy efficiency; ensuring a truly one-of-a-kind home that exceeds expectations.

Home #5



Smart'n Construction

Derek Mueller
Mn: BC726807
10 Main St E
Richmond, MN 56368
320-597-7300
derek@smartnconstruction.com
smartnconstruction.com

Derek Mueller has been serving the local building industry since 2005. He grew up on a small farm here in Central Minnesota, where his roots in a strong work ethic, integrity, and creativity were established. Derek has worked in the construction industry for 21 years and at Lifestyle Lumber for the past 14 years in sales and estimating, with that he is an expert in building materials and has a passion for design and building turnkey homes.

Homes #2



Tenney Construction Services

Shaun Tenney
BC739859
1100 Madison Court
Sartell, MN 56377
320-774-0723
shaun@tenneyconstructionservices.com
tenneyconstructionservices.com

At Tenney Construction Services, our mission is to build high-quality homes that combine craftsmanship, integrity, and lasting value - creating spaces where families can thrive and feel truly at home.

Home #16



Werschay Homes

MN: BC405091
3333 Roosevelt Road
St. Cloud, MN 56301
320-230-9909
jim@werschayhomes.com
werschayhomes.com

David and Mollie Werschay founded Werschay Homes in 2003 with the mission of building homes using the most unique practices while offering a service unparalleled by anyone in the industry. Offering conventional building service as well as custom design build, Werschay Homes has put together a team that can handle projects of any size and scope. Honesty, Integrity, Flexibility and Innovation (HIFI) are the core values that enrich our future at Werschay Homes. HIFI, along with Christian values defines our responsibilities to our clients, co-workers and ourselves. The quality of our employees reflects in the product and service we deliver. Passionate and genuine people are the key reason so many of our customers refer Werschay Homes to their friends and family. **2025 Winner Midwest Design Best in Show Award.**

Homes #4, #15



Woodland Homes

Robert Klaphake
MN: BC565225
22296th Street S
Sartell, MN 56377
320-230-7700
robklaphake@woodlandhomes.biz
woodlandhomesonline.com

Woodland Homes, Inc. was established in 2005 by Robert Klaphake. Over 20 years, Woodland Homes has become a leading residential builder in Central Minnesota. Woodland Homes has a network of trustworthy subcontractors & dedicated employees to help you realize your ideal home, start to finish, from design services to post sales services. With over 30 years of licensed contracting experience and more than 400 homes built, Rob has honed his practice of custom home building, and achieved an unmatched understanding of what clients want, expect and love of the finished product, making Woodland Homes a widely known and well-respected custom home builder in the central Minnesota area.

Homes #1, #3, #13

Find Builders & Remodelers. Get Inspired!

Welcome to the CMBA Tour of Homes
Search for Builders and Remodelers for your first home or dream home or your remodel project.

Go to CMBAonline.org



FOLLOW THE SIGNS...

12

TOUR OF HOMES

CENTRAL MINNESOTA BUILDERS ASSOCIATION

No food or drink inside homes • Wear socks • No shoes • No bare feet



Scan the QR Code for the CMBA Tour App

CMBAtour.com • CMBAonline.org • INFO@CMBAONLINE.ORG • 320-251-4382

TOUR OF HOMES

CENTRAL MINNESOTA BUILDERS ASSOCIATION



March 20-22 • March 27-29

Friday 4:30-7 pm • Saturday & Sunday Noon-5 pm

Tour of Homes Committee



David Werschay
Tour of Homes Chair
Werschay Homes, Inc.



Marty Czech
Premier Real Estate
Services - Mary Czech



Anthony Steinemann
ADS Designs



Jack Brandes
Lumber One-Avon



John Blenker
Westwood Professional
Services, Inc.



Ernie Wollak
Wollak Construction, Inc.



Pat Edelbrock
Woodland Homes, Inc.

Tour of Homes Model Pricing

Price Range/Builder	Tour #
\$400,000-\$499,999	
Woodland Homes	
129 Highlands Boulevard NE, Melrose	1
Smart'n Construction, LLC	
107 Barry Loop NW, Richmond	2
Woodland Homes Inc.	
76 Meadow Lane, Cold Spring	3
Klein Builders	
1317 Iris Lane, St. Joseph	9
DG Homes & Remodeling, Inc.	
3202 Old Stone Way NE, Sauk Rapids.....	17
\$500,000-\$599,999	
Schnettler Custom Builders, LLC	
3401 Wildflower Rd S, St. Cloud	5
Lumber One, Avon, Inc.	
3085 Nottingham Rd S, St. Cloud	7
Berscheid Builders, LLC	
1116 Lanigan Way SW, St. Joseph	8
Berscheid Builders, LLC	
611 Brookwood Lane, St. Cloud.....	10
Bulow MN, Inc.	
5913 Rub Of The Green Street, St. Cloud ..	18
\$600,000-\$699,999	
Elite Development, LLC	
2016 Forest Court St. Cloud	11
Woodlands Homes, Inc.	
1958 68th Avenue North St. Cloud	13
Tenney Construction Services, Inc.	
965 3rd Avenue SW Rice	16
\$700,000-\$799,999	
Elite Development, LLC	
2024 Forest Court St. Cloud	12
Infinity Homes, ljnc.	
524 Northern Meadows Lane, Sartell	14
\$900,000-\$999,999	
BNH Contractors	
3408 Granite Way, St. Cloud	6
\$1 million and over	
Werschay Homes, Inc.	
22097 Majestic Drive St. Augusta	4
Werschay Homes, Inc.	
2709 Lehman Court, Sartell	15

THANK YOU TO OUR SPONSORS:



When touring homes:
No food or drink inside homes
Wear socks • No shoes • No bare feet



Create Beautiful Outdoor Spaces

With all the beauty Mother Nature has to offer, a few pops of color or other simple embellishments can help make your yard look superb from the curb.

Article from Family Features • Photos from Vecteezy.com

Whether you're looking to enhance your front yard, backyard, porch or patio space, consider these easy and affordable ways to spruce up your outdoor oasis:

Add Mirrors

Just as they do indoors, mirrors can open up small patio spaces and make areas feel larger. Use mirrors made with resin or other waterproof materials so they won't be compromised when exposed to the elements.

Make Bold Statements

Plant your favorite flowers in a giant, bright red or yellow pot or hang a bright colored swing

from a tree. Just a little dab of color can make a statement and brighten the whole space.

Hang It Up

Place hanging baskets around the porch to bring punches of color to your outdoor sanctuary. With the freedom to pick and choose your favorite plants and flowers, these baskets have the added benefit of easy maintenance.

Consider Time When Planting

If you wish to add color to your landscape, consider the time of day you normally spend in

Continued on next page.



Continued from previous page.

your outdoor space. Early risers may appreciate vibrantly colored foliage that perks with the morning sun. Those who spend time outdoors in the evening hours can incorporate white or lightly colored plants that take on a silvery sheen in the moonlight.

Tie Up a Hammock

Make a relaxing retreat in the comfort of your own yard by hanging a hammock from trees or between posts on your deck.

Add a Birdbath

These garden favorites come in a variety of styles and colors to fit your unique tastes and budget.

Birds of all kinds can find an oasis in their new bath and provide you with a beautiful view.

Throw Some Pillows

Outdoor pillows are often available in the same fun designs of their indoor counterparts. Add some throw pillows to your outdoor furniture for a chic yet comfortable update.

These subtle changes can help beautify your outdoor spaces and cause onlookers to do a double-take – for the right reasons. Find more ideas at eLivingtoday.com.



Make your brand feel like home.

TraceCreative

Strategic. Creative. Results.



Designer & Publisher of the CMBA Tour of Homes magazine.

Brochures & Marketing
Collateral Design

Marketing Strategy &
Campaign Management

Brand Identity & Logo Design

Catalogs, Newsletters,
Annual Reports, Magazines

320-290-2518 • zwillingtracy@gmail.com • www.tracecreative.pro



CENTRAL MINNESOTA
**BUILDERS
ASSOCIATION**

TOUR OF HOMES APP

Search the app store for "CMBA Tour"

Free!

- The Latest Tour of Homes Event Information
- All Tour Model Info & Builder Info
- Save Your Favorites, Make Notes & More!

Use the camera on your phone to open the app with the QR Code



Plan your Tour of Homes trip and more!



Become a
CMBA Member
Today!

ADVERTISERS INDEX

Please take a moment to review the CMBA members and advertisers in this guide. Their support makes it possible for the CMBA Tour of Homes Guide to be shared with you in a printed and digital formats.

Guides can be picked up at **Coborns** and **Little Dukes** throughout Central Minnesota, at the CMBA office, and at all model homes.

ADS DesignInside Front Cover
 Ameribuilt Buildings, Inc. 19
 American Door Works..... 35
 American Heritage Bank..... 3
 Citywide Insulation 17
 Coborns..... 22 & 37
 Deerwood Bank..... 21
 DG Homes & Remodeling Inc.. 11
 East Side Glass Company 15
 Falcon National Bank..... 29
 Infinity Homes 4 & 5
 Knife River 21
 Lake Friendly Lawn Care..... 19
 Liberty Bank Minnesota 31
 Lumber One 27
 Magnifi Financial
 Credit Union..... Back Cover
 Mid-State Tile
 Company, Inc ... Inside Back Cover
 Minnwest Bank..... 19
 Pipers Plumbing of Central MN.. 15
 Quality Appliance 23
 St. Rosa Lumber 35
 Simonson Lumber 13
 Trace Creative 45
 WestWind Woodworkers..... 17
 Woodland Homes..... 6 & 7

- Support and join others in advocating to protect and strengthen the building industry
- Stay on top of important legislative and regulatory affairs
- Get more workers in the building trades through CMBA's Tools for Schools program
- Exchange best practices with colleagues in the building industry
- Get Builders Continuing Education with your membership
- Make valuable, professional and personal connections at CMBA meetings and social events
- Showcase your products, services, expertise and skills at community showcases like the Tour of Homes and Home Show
- Market your business services and solutions



Scan the
QR Code
for a full listing of
your trusted
Central Minnesota
Community
Partners for your
commercial or
home needs.

MID-STATE TILE COMPANY

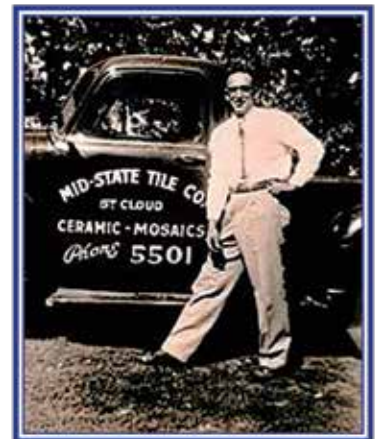
5th Generation Family Owned.
Over 94 years in business.

320-252-1242

Ceramic Tile Sales and Installation

Serving Entire Area Since 1931

402 Lincoln Ave. NE
St. Cloud, MN 56304



Serving the community as a family business for more than 90 years
Proud members of the Central Minnesota Builders Association
& St. Cloud Area Chamber of Commerce



MAGNIFI WHAT MATTERS

Big plans deserve a better home loan.

Home construction
loans with only
one closing.

Lower down
payment with 90%
LTV financing.

Top-Rated
Mortgage Loan
Experience.



MAGNIFI[®]
FINANCIAL

magnifi.creditunion